

# AES BULLETIN

Anshe Emet  
Synagogue

1873 • 2023

150 

SEPTEMBER • OCTOBER • 2023



*Honoring Our Heritage • Focused On Our Future*

# Listening for the Sounds of the Shofar Not Sounded



**Michael S. Siegel**  
Senior Rabbi  
The Norman Asher Rabbinic Chair  
[msiegel@ansheemet.org](mailto:msiegel@ansheemet.org)

**There is no moment of the year like the** sounding of the shofar on Rosh Hashanah. There is a moment of anticipation as the *Baal Tekiah* places the shofar to their lips and the congregation prepares to hear an ancient call on one of the world's oldest instruments. Observing all of this from the Bimah, it appears as though everyone in the room has become wonderfully childlike, listening to the notes of the shofar. Some are remembering standing with the parents and grandparents and sharing the experience; others are hearing the shofar blasts for the first time. The sounding of the shofar links us to one another, to Jews around the world and across time. Because the first day of Rosh Hashanah falls on Shabbat this year, the Shofar is not sounded. What shall we put in its place?

According to the Talmud, the reason for the stricture against sounding the Shofar on the Sabbath day is because of a fear that a person might inadvertently violate the Shabbat by carrying the shofar in a forbidden area in their zeal to hear its sounds.

*Rabbah said: All are obligated to blow the shofar, but not all are skilled in the blowing of the shofar. Therefore, there is a danger that one will take the shofar and go to an expert to learn*

*[how to properly sound it], and he will carry it four cubits in the public domain [—an act that is forbidden on the Shabbat]. Rosh Hashanah 29b*

While we will not sound the Shofar at Anshe Emet this year on the first day of the New Year, that does not mean that we should not reflect on the deeper meaning of the Tekiah, Shevarim, Truah, and the Tekiah Gedolah.

Tekiah is the note that calls the people of Israel together. It offers us a moment to take pride in being part of a great people. The note also prompts us to ask ourselves about the unity of the Jewish people in this moment and how we might address deep discord that exists. At Anshe Emet, we work to create a place where a truly diverse community, representing a full spectrum of ages, practices, and beliefs religious and political, come together. This past year, we brought in an organization called “Resetting the Table” to help teach cohorts of people representing a wide range of views on Israel to communicate more effectively, to be better listeners. May the resonance of the Tekiah inspire us to attune our ear to one another and lean into the unity of our people and community in the coming year.

Shevarim is a note that acknowledges the obligations that members of a community

share with one another. During the course of the year, we are blessed to join in many moments of celebration for families, from welcoming newborns to B'nai Mitzvah, weddings, and anniversaries. Beyond the sounds of joy and gratitude, there are cries that are harder to hear. The painful sounds of those facing life challenges, and those who may feel excluded for some reason. At Anshe Emet, we work hard to be fully present for our entire community, but there is so much more that needs to be done. May the resonance of Shevarim help us to become more attuned to the joy as well as the pain and fear within our community and to engage together in the work of healing.

Teruah serves as the alarm clock of the Jewish people. It cries out to us to wake up and take action. It is the note of urgency. While there are difficulties in each of our lives that need attending to and have been put off, this year, there are pressing issues facing all of us that need to be addressed. The climate crisis has produced a record heat wave, forest fires throughout the world, and changes in the environment from the icecaps to the coral reefs. The level of hateful discourse in our country, as well as fearmongering,

## CLERGY & STAFF

### CLERGY

**Rabbi Michael S. Siegel**, Senior Rabbi  
**Cantor Rachel Brook**, Senior Cantor  
**Rabbi D'ror Chankin-Gould**  
**Rabbi Benjy Forester**  
**Cantor Liz Berke**, Hazzan Sheini  
**Hazzan Alberto Mizrahi**, Hazzan Emeritus

### STAFF

**Mimi Weisberg**, Executive Director  
**Yair Bernstein**, Director of Ritual Advancement  
**Tamar Brooks**, Clergy Administration Manager  
**Michelle Brown**, Operations/Benefits Accountant  
**Mardi Caminer**, Grodzin Director of Education & Innovation  
**Kim Carter**, Director of Hospitality  
**Javier Cruz**, Executive Chef/Director of Kitchen Management  
**Danielle Goldman**, Education Team Administrator  
**Maxine Handelman**, Director of Family Life & Learning  
**Hannah Jarvis**, Development & Advancement Manager  
**Carol Karlinsky**, Office Manager

**Amy Karp**, Director of Engagement,  
The Malkin Family Program Director &  
Director of Adult Education  
**Hannah Kinsella**, Youth and YAD Engagement Specialist  
**Tyler Manning**, Director of IT  
**Victoria May**, Executive Assistant to Rabbi Siegel  
**Brian Schmidt**, Director of Communications  
**Emma Sternberg**, Music Team Administrator  
**Steve Strien**, Director of Finance  
**Matthew Tobias**, Director of Safety & Security  
**Gilberto Vargas**, Director of Facilities

# A Message from Our Board President

have impacted our society in very dangerous ways. The State of Israel is as divided as it has ever been. Let no one downplay the urgency of this moment. Our Anshe Emet community works to bring the relevance of Judaism to the issues of the day and direct our community to constructive action. May the resonance of the Teruah awaken us to act thoughtfully and effectively in the year to come.

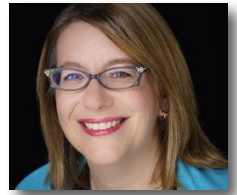
Finally, there is the Tekiah Gedolah, the long note that calls on us to dream of a better tomorrow. It bids us to reflect on what that future would look like and what steps can we take today to create. As our congregation enters its 150th year the Tekiah Gedolah bids us to consider what our congregation can be and how, together, we can make a positive difference and create a better future for all. Today we look within to hear its resonance in order encourage us to dream of what can yet be.

This year, we will not sound the Shofar on the first day of Rosh Hashanah, but that does not mean that its notes will not be heard. Rather than attuning our ears outward, let us turn them inward and respond to the call.

Janet joins me in wishing everyone in our community a *Shana Tova U'Metukah*: A Sweet New Year for you and your families, our brothers and sisters in Israel, and the world itself.



**Danielle Lazar**  
President  
Anshe Emet Synagogue  
[dlazar1971@gmail.com](mailto:dlazar1971@gmail.com)



## We are the stories we tell...

A number of years ago, before Jay and I had kids, I took a writing seminar called "We are the Stories We Tell." The idea was to get people writing and thinking about how our lives are shaped by our stories. We focused on the details of the narrative and the small moments that we may have forgotten. For me, it inspired me to not only consider my story, but those of others. When I meet someone new, I ask, "What is your story?" How did YOU come to be here in this moment? It is an especially effective way of getting individuals and groups to break free of the standard description of their family and where they are "from", or what they "do", and share part of themselves with others.

This year, Anshe Emet is celebrating its 150th anniversary as a Jewish congregation in Chicago. I can barely imagine the number of stories that our walls hold. The friendships and marriages, the children and grandparents, the laughter and the sorrow. Perhaps most importantly, we have stood next to each other and linked arms and hearts as one community. We have celebrated 150 High Holy Days. We have heard the music of our tradition, both in prayer and in community song.

We have seen tragedy and horror in our city and across the world, especially the devastation of anti-Semitism. We have seen the struggle for the creation of Israel, and the joy of our children and our families as we—as Rabbi Siegel has said—can be openly Jewish and American in this time.

The story of our community, both here at Anshe Emet and the larger Jewish community, is vast, but there is no doubt in my mind that it is the smaller moments that are so critical to our collective story. So I ask, What is your story? What are the stories you tell your children? What are the stories your children will pass on to their families and friends? For me, my story, and the story of my immediate family, Jay, Josh, and Ayelet, is embedded in that of Anshe Emet. As I enter another season of Holy Days, all I can think about is the incredible gratitude I have to be part of the history of this amazing community.

Wishing you and your loved ones *L'shana Tova*. May you be written and inscribed in the Book of Life for a year full of sweetness, family, love, and peace.

With love,



## BOARD OFFICERS & TRUSTEES

**Danielle Lazar**

President

**Sam Schwartz-Fenwick**

Executive Vice President

**Scott Frazin**

Vice President

**Ben Kleinman**

Vice President

**Arnie Rubin**

Vice President

**Lindsey Seeskin**

Vice President

**Mimi Wallk**

Vice President

**Lynne Schatz**

Secretary

**Marc Gould**

Treasurer

Trustees

**Tracy Ankin**

**Jessica Bearak**

**Deborah Brown**

**Chika Chandler**

**Simon Fleischmann**

**Wendy Kline**

**Josh Liss**

**David Medow**

**Alan Mintz**

**Ruth Rau**

**Adam Rubenfire**

**Natalie Schneiderman**

**Neil Schwartz**

**Melissa Walny**

**Art Friedman**

Immediate Past President

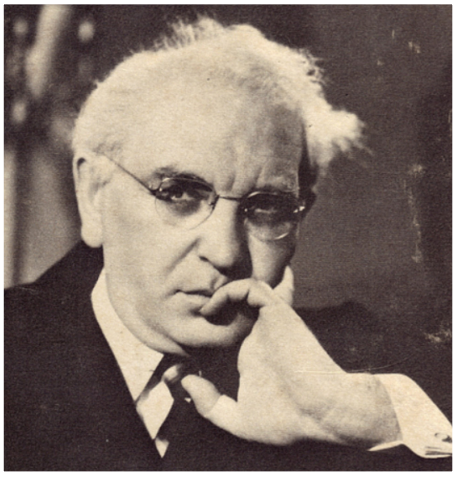
# AES Moments • 150 Years

## Anshe Emet Synagogue

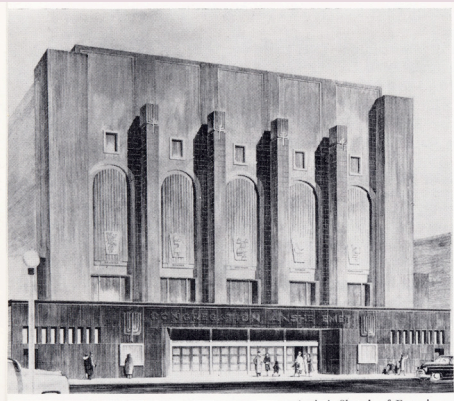
1873 • 2023

# 150

*Honoring Our Heritage  
Focused On Our Future*



Above: Rabbi Solomon Goldman  
AES Senior Rabbi from 1929-1953;  
Below: The Solomon Goldman Auditorium



If you'd like to share your Moment,  
please contact Elaine Seeskin:  
[elaine.seeskin@gmail.com](mailto:elaine.seeskin@gmail.com)  
or 314.882.1252.

Join us by adding YOUR Anshe Moment  
so that we may paint a full picture of our  
vibrant Anshe Emet community at 150!

Saralyn Levine's legacy in Anshe Emet is unique among our membership. Her great-grandfather, Lazarus Levy, an immigrant from Great Britain, was one of the founding members of Anshe Emet. Her grandmother Sara Levy (for whom Saralyn is named) was confirmed at Anshe Emet in 1886. Her mother Julia Dry, the youngest of 3 sisters all confirmed at Anshe Emet, was herself confirmed in 1915. Saralyn was confirmed in 1948. She was married at Anshe Emet and her two sons became B'nai Mitzvah in 1977 and 1979. She has maintained a lifelong membership in Anshe Emet.

Her Anshe Moment reflects on her relationship with Rabbi Solomon Goldman, who served Anshe Emet from 1929-1953 and was a guiding influence in Saralyn's young life:

"Rabbi Goldman was very beloved in the congregation. He was particularly admired by young people and made young people feel welcome and valued in the membership. He was larger than life, but yet approachable, partly due to his soothing voice and calming influence. He was always at ease when he spoke with the community. I remember that when he spoke from the bima, he never stood behind a lectern or spoke from notes.

He always leaned on the lectern from the side and spoke from the heart. His sermons were always focused how one should conduct one's life and he and his wife were wonderful examples for our community. Rabbi Goldman was interested in making Judaism modern and relevant. I didn't realize the full impact of the moment, but I remember the High Holiday sermon in which he advised the congregation that it was acceptable to ride or drive to synagogue on Shabbat. He emphasized that the important thing was to attend, and it didn't matter how one got there. This announcement was revolutionary at the time and definitely caused a buzz in the congregation.

I also remember his extraordinary funeral. It was during the time when Anshe Emet owned the Sheridan Theater (later named the Solomon Goldman Auditorium). It was standing room only with crowds on the street. The speakers were noted rabbis and authors. I remember attending and feeling bereft at this passing. Rabbi Goldman is the rabbi against whom I compare everyone who came after."

**Saralyn Levine**

## TANACH AND LITURGY: THE HOLIDAY CONNECTIONS: FOR SUKKOT, WITH JACOB CYTRYN

Join us for one our session on Sukkot and then as we do a deep dive into the structure of Hallel, close readings of some of the individual Psalms, and the Talmudic rabbis' discussions of the service itself! We will also have one session for Hanukkah, and Pesach. More detail on those to come.

First class meets Wednesday, September 27  
at 7PM.

## NEW MEMBER DINNER IN THE SUKKAH

Monday, October 2  
6PM

Come and meet Anshe Emet clergy and staff, and enjoy a "home-cooked" meal prepared by our own Executive Chef, Javier Cruz. Dinner will be served in the community sukkah.



## CELEBRATING THE DIVERSITY OF THE JEWISH PEOPLE

Thursday, October 26  
7PM

In person

Three short clips from films and one television show of Jews of Color will be presented, followed by a discussion with three panelists each coming from the Mizrahi, Asian and Black Jewish background. Our panelists include Rachel Harrison Gordon, Becca Nix Tham, and Hagit Lewis. Read their bios online when you register.

# Upcoming Programs at AES



## THE MUSIC OF ISHAY RIBO TAUGHT BY JAKE GILLIS

Sunday, October 15  
10AM

Ishay Ribo and his textually-based lyrics have taken Israel and the entire Jewish world by storm. In this class, we will explore how Ribo adapts these ancient texts to resonate with a contemporary audience, enriching our understanding of the Torah's timeless

wisdom through a modern lens. Jake Gillis, a native of Pittsburgh, has studied at Pardes and Hadar, and worked for Ramah, the American Hebrew Academy, and Onward. He holds an MA in Jewish Education from the Jewish Theological Seminary. Jake currently lives in Tel Aviv with his wife, Lior.



## BIBLICAL WOMEN: EMERGING FROM THE MARGINS THROUGH MIDRASH

Mondays, Oct. 16-Dec. 18  
7PM-8:30PM

A Melton Curriculum taught by Rabbi Michael Siegel and Tamar Cytryn. Tracing major female figures of the Bible through classic and modern midrashic commentary, we meet a dazzling line up of more than

a dozen biblical heroines — some you may know and some you may have never heard of! Let's go behind the scenes to gain multiple perspectives on their lives, relationships, and choices, as we understand their roles in Jewish history and literature as full, well-rounded characters. 10 week class.



## JEWISH HUMOR: THEN AND NOW

JCC COMMUNITY  
DAYS AT ANSHE EMET  
Monday, October 23  
12PM-1:30PM

Join Rabbi Michael Siegel as he delves into the concept of Jewish humor. Is it humor that is overtly Jewish in its concern, characters, or symbols? Or is it Jewish because of language or values? Using various clips from

television, movies, and comedians, we will examine various artists and Jewish themes from the changes in humor through the decades. From Jackie Mason to Adam Sandler and so much more. Noon Lunch, program from 12:30PM-1:30PM

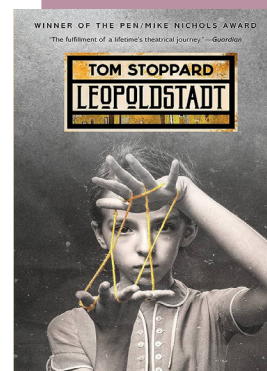


## ISRAEL AND THE US PRESIDENTS WITH AMIR TIBON

Sundays, Oct. 22-Dec. 3  
11AM

The United States has had 14 presidents since 1948, when Harry Truman took the fateful decision to recognize the State of Israel and put in place the foundations for the U.S.-Israel relationship. In this two-part course, Haaretz journalist Amir Tibon will guide us through the fascinating history of American presidents and Israel, from Truman and Eisenhower to Trump and Biden. Who was the 'toughest' U.S. President toward Jerusalem? What were the most important changes in the relationship?

## LEOPOLDSTADT



## ANSHE EMET BOOK CLUB WITH RON HIRSEN

Tuesday,  
October 24  
7PM

Register for these events and much more at [ansheemet.org/events](https://ansheemet.org/events).



**Rachel Brook**  
Senior Cantor  
The Arnold H. Kaplan,  
M.D. Cantorial Chair  
[rbrook@ansheemet.org](mailto:rbrook@ansheemet.org)



As we head into the fall season, Anshe Emet is a-"buzz" with the excitement of a new year! Our team is hard at work preparing for another season of beautiful, majestic, and meaningful High Holy Day services- we all hope to see you within these walls!

We can't wait to welcome Jewish rock star and Grammy Award Winner, **Joanie Leeds**, who brings her special sounds and fabulous presence to our annual Apples & Honey Selichot concert on **Saturday, September 9**.

The AE Music Team is also thrilled to offer some new and returning community musical experiences. **Todd Kessler** will be holding a monthly **Anshe Emet Community Jam Session** on Sunday afternoons, **beginning Sunday, September 10**, for all members, **ages 13-103**, who are proficient in an instrument (can read music and/or basic chord charts) and looking to make music and community with our very own Mr. Todd.

Our **Anshe Emet Youth Choir** is returning and will make special appearances on **Erev Rosh Hashanah** as well as various Shabbat services and performances throughout the year. Look for more information about our **two youth choirs**, one intended for K-2nd and a choir for our 3rd-6th grade singers!

On **Saturday night, October 8**, we invite all Anshe Emet members to dance with the Torah as we round out our High Holy Day season on Erev Simchat Torah with music and dancing led by the **Anders Band**.

**We can't wait to see you soon—welcome home!**



*A Note On Our Cover Artwork*

**THE CONGREGATION** | By Karen Dana Cohen | 2021

AES member, **Karen Dana Cohen**, born in 1982 in Mexico City, is an artist, educator and independent curator based in Chicago, IL.

She has participated in national and international exhibitions, She teaches Professional Practices and Studio Courses as well as been a curator and organizer. Her most recent project **Longing Compass** explored how at the margins, we always belong to unbelonging. We can only really understand from standing in the periphery. It is the center that holds the space open, keeps it together, and guards it safe from outsiders. It can be winded to accommodate more, and narrowed when people leave. The center of the circle is the pivot, the focus, and the essence even when it is empty. It represents the purpose and intention of the collective. It is not the outside of a pot, or a room that is essential, but the empty space each creates

inside, when its purpose is realized. The circle way involves mutual agreements of sequence to reenact flexibility.

She is an active member of **Tiger Strikes Asteroid Chicago**. For the last five years she has been a leading mentor in a critique group of artists who are also caregivers. I paint as a performative practice; to explore how we inhabit our bodies in a foreign context while making bridges to meet the viewer halfway. I aim to reclaim the meaning of home and place, and the consistent looming threats of erasure, removal and cultural legacies imposed on immigrants like me. The gestures on the pieces explore displacement, belonging, translation, and power dynamics. I treat Painting as an expression beyond language, confronting a rhetoric of exclusion. Work that embodies and gives voice to the lived immigrant experience as testimony of longing, migration, and shaping new identity. As Gloria Anzaldua said: "To survive the borderlines, you must live sin fronteras, be a crossroads"

**Karen Dana Cohen**



**Yair Bernstein**  
Director of Ritual Advancement  
[ybernstein@ansheemet.org](mailto:ybernstein@ansheemet.org)

It's been so wonderful settling into my position as Director of Ritual Advancement at Anshe Emet. It is such a warm and welcoming community! I enjoy working with the AES team and engaging with the congregants on Shabbat.

## Torah readers:

During my various conversations with congregants, I noticed that there are many people who are interested in reading Torah, but don't know how to go about doing so. Fear no more! If you are interested in chanting Torah for us in the Sanctuary from time to time, just reach out to me to let me know you are interested. We will schedule a Zoom or an in-person meeting so I can hear you chant, and then we will discuss together your preferences in terms of Torah/Haftarah reading, and how much advance notice you need to learn an Aliyah. **That's all there is to it!**

So contact me if you are interested:  
[ybernstein@ansheemet.org](mailto:ybernstein@ansheemet.org)

**YOU TOO CAN BE A  
PURR-FECT TORAH  
READER AT AES!**



## MORNING MINYAN:

We are back to IN-PERSON Minyan on both Thursdays & Fridays! Join us **every Thursday and Friday at 7AM in the Bennett Library** for a wonderful weekday service and Torah reading. **Looking forward to seeing you there!**



**Maxine Handelman**

Director of Family Life & Learning  
[mhandelman@ansheemet.org](mailto:mhandelman@ansheemet.org)



## NAVIGATING CHOOSING A SCHOOL

School may just have started, but we're already thinking about next year. We're here with support for parents thinking about how to choose an elementary school or high school. **Carolyn Aberman** of Chicago School GPS, **Cheryl Maayan** of Prizmah, and **Andrea Jacobs** of JCFS join **Maxine Handelman**, AES director of Family Life & Learning, to provide guidance to parents thinking about CPS, Jewish Day School, or private school. We are here to help you stay on track through it all!

**Choosing an Elementary School:**  
**Zoom sessions for parents**  
**of 2-4-year-olds**

Tuesday, September 5  
 7:30PM

**Choosing a High School:**  
**Zoom session for parents of**  
**middle-schoolers**

Wednesday, September 6  
 7:30PM



## LITTLE BUILDERS

Sundays  
 9:15AM-10:30AM

Little Builders is Anshe Emet's amazing class **for families with 2-3-year-olds!** The Fall Little Builders class will immerse your family in the Jewish values of blessings and gratitude and will even help get you ready for Chanukah with song, stories, and art. Registration will be limited to 10 families.

Little Builders is taught by Anshe Emet's Director of Family Life & Learning, Maxine Handelman. Fall dates are Oct 22, Oct 29, Nov 5, Nov 12, Dec 3 & Dec 10, 2023



## SPECTACULAR SUKKOT FAMILY EXPERIENCE

Sunday, October 1

**FAMILIES 2ND GRADE AND UNDER:**  
**10AM**

Celebrate Sukkot in a dramatic and musical service for families with kids 2nd grade and under, with Mr. Todd, Max Handelman, Cantor Rachel Brook, and Sivan Spector from the Chicago Children's Theatre. After the service, we embark on a dramatically silly Sukkot experience with Sivan Spector, embracing the value of welcoming guests to our sukkah, and of course, waving lulav and etrog. **Stick around for the Community Kiddush lunch around noon.**

**FAMILIES 3RD-8TH GRADE**  
**11AM**

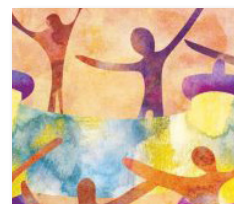
Join us to celebrate the second day of Sukkot! Come at 11AM for a family service with Mr. Todd and Cantor Rachel Brook. Stay for our large community lunch and then participate in family activities. As a family, you will have the opportunity to learn with a Rabbi, complete a tzedakah project and more.

## YOUNG FAMILY SHABBAT

Friday, October 27  
 4:45PM

Welcome in Shabbat with Anshe Emet friends with babies to 5-year-olds. In this musical service, we'll dance and share stories in prime toddler fashion with **Mr. Todd**, **Rabbi Benji**, and **Maxine Handelman!**

Join us at 4:45PM to schmooze and nosh before the 5PM service. A delicious and kid friendly dinner follows. Afterward, kids enjoy more stories and play time in the gym with AES teen supervision, while parents have a chance to schmooze and meet new friends. **Stay tuned for registration information!**



Code for Dinner



Code for Torah Reading



## READICULOUS

Saturday October 7

Join us for our Annual Anshe Emet Simchat Torah Celebration, Kids Style, on Saturday, October 7! Kick off the evening at 4:30PM with so much singing and dancing with the Torah that your feet and throat will hurt (in a good, fun kind of way!). Then we will have the exciting opportunity to hear students, 2nd grade and older, read from the Torah itself! If you have a 2nd grade student or older who would like to read Torah, please sign up by September 22. Our younger students will open and close the Ark as we begin and conclude the Torah service. At 5:30PM, we join the community for a delicious dinner.

## BABY JAM

Sunday, November 5  
 3:30PM-5PM

Families with children 2 years old and younger are invited to join **Max Handelman** and **Miss Aimee** for songs, stories, and schmoozing. This is a great way to connect with other families with kids the same age as yours!



# AES Religious School



**Mardi Caminer**  
Grodzin Director  
of Education & Innovation  
[mcaminer@ansheemet.org](mailto:mcaminer@ansheemet.org)

*For any questions about the Religious School, please email Mardi!*



## TACOS & TEACHERS

Thursday, October 12

Meet your Religious School teachers and have dinner with the community. Be sure to add to the AES 150th Anniversary Mosaic!



## NOAH'S ARK

Sunday, October 15

After reading about Noah and his animals, our Kindergarten through 2nd graders are invited to Noah's Animal Show in the gym at Anshe Emet! Participants in Religious School will be taken from their class to the program. There will be a dairy lunch provided before the show.



## DAY-OFF PROGRAM

Thursday, October 26

Kids are welcome to join us for a fun-filled day-off program with Anshe Emet when CPS is out. We will be crafting, playing outside and more all while meeting other Jewish friends. Breakfast, lunch and two snacks provided.



## LET US PUT IN THE CALENDAR DATES FOR YOU!

Scan the QR code below to add the Google calendar to your device!



Sunday  
RS Schedule



Monday  
RS Schedule



Thursday  
RS Schedule

## IT IS NEVER TOO LATE TO JOIN!

This year, our religious school starts on Sunday, October 15. We welcome families to join at any time! Register by scanning the code above!

## FAMILY EDUCATION

We encourage you to continue learning with your family at home. Check out more information online at [ANSHEEMET.ORG/FAMILY-EDUCATION](https://ansheemet.org/family-education) and learn about all of our High Holy Day programs designed for older and younger kids!

## APPLES AND HONEY FESTIVAL & CONCERT



SATURDAY, SEPTEMBER 9  
5PM

**For families with children 0-8 years old!**

Welcome to the Anshe Emet Apples and Honey Festival & Concert! We will have a delicious dairy dinner at 5PM, with activities especially designed for 0-2 year olds, and 3-8 year olds. The highlight of the evening will be a fabulous concert with Grammy Award-winning artist, **JOANIE LEEDS!**

**\$36/Per-Member Families**  
**\$54/Non-Member Families**  
Registration closes Tuesday, September 5 at 5PM.





## ELUL TEEN SELF HELP HOME VOLUNTEERING

Sunday, September 10  
11AM-12PM



Join us for a volunteer opportunity at the Self Help Home in celebration of Elul. We will be spending time with residents playing High Holy Day themed bingo and enjoying snacks.

## DINNER IN THE SUKKAH WITH RABBI BENJY

Wednesday, October 4



Come have dinner in the Sukkah and hang out with our newest member of the clergy team, Rabbi Benjy Forester!



Apply online at:  
[ansheemet.org/events/madrachim-application](https://ansheemet.org/events/madrachim-application)

## ADL SPEAKER FOR HIGH SCHOOLERS

Sunday October 22

Join other high schoolers in conversations about anti-Semitism. We will begin with lunch at noon followed by a 90 minute session led by a facilitator from the ADL!



## FIRST AES TEEN LEADERSHIP BOARD MEETING

Monday, October 23

Join us for our first AES Teen Board meeting! Help us plan fun events, get to know the AES Teen community, and be a part of teen leadership. Anyone is welcome to come!

Fill out the Teen Information Survey and select "yes" you are interested in AES Teen Leadership—just scan the code!



## AES TEENS: APPLY TO BE A MEMBER OF OUR MADRICHIM PROGRAM

Calling all 9th - 12th Graders! We are looking for teens who are willing to learn, work on a team, and have dedication to the students of the Anshe Emet Religious School. As a Madrich you will gain valuable work experience, receive thoughtful professional development, and be a part of the vibrant Anshe Emet Religious school community.

## YOUNG ADULT DIVISION for ya's 22-36

ANSHE EMET SYNAGOGUE

Follow our YAD Google calendar to stay up to date with upcoming events!

Check out some exciting YAD events that we have coming up:

### SEPTEMBER

#### SIMCHAT TORAH

October 7

On Erev Simchat Torah, we will have a celebration specially geared towards YAD in partnership with **Base Hillel** and **Mishkan Chicago**. More details to come!

#### YAD HIGH HOLY DAY TICKETS

To learn more about our multiple service offerings, and purchase your YAD HHD tickets, scan the code below:



### OCTOBER YAD SHABBAT IN THE SUKKAH

October 6

Join us as we celebrate Sukkot and Shabbat together in the Anshe Emet Sukkah

### MOCKTAILS, MULES AND MOSAICS

October 12

Join us as we work on a special mural commissioned especially for Anshe Emet's 150th Anniversary. We will be working on placing tiles on the mural with the artist while enjoying a drink of choice.

### FALL PICKLEBALL LEAGUE

Join Anshe Emet YAD's Pickleball League! Sign up with a friend and come meet new ones! All games will be played inside the gym on Tuesdays.

Register here!



# AES Elul Programming



## HEALING SERVICE WITH RABBI D'ROR CHANKIN-GOULD AND CANTOR LIZ BERKE

Thursday, September 7  
7PM

*Refaeini, Adonai, V'neirafeh* — "Heal us,  
Adonai, and we shall be healed"

Join Rabbi Chankin-Gould and Cantor  
Berke for a one-hour healing service with  
music, meditation and an opportunity  
to calm and center your life.



## HEBREW BENEVOLENT SOCIETY CEMETERY CLEAN UP

Sunday, September 10  
10AM

Join members of our community for the  
mitzvah of cleaning up this historic Jewish  
cemetery, The Hebrew Benevolent  
Cemetery, located on Clark (before Irving  
Park Road) next to Wunders Cemetery.  
Clean up will include weeding, and  
removing some small branches. We will  
meet at the entrance to the cemetery.

## SELICHOT: FORGIVENESS IN CONFLICT

Saturday,  
September 9



**AMERICAN FRIENDS  
of the PARENTS CIRCLE**  
— FAMILIES FORUM —  
*Palestinian and Israeli Bereaved Families for Peace*

Join Rabbi Michael Siegel, Rami Elchanan  
and Bassam Aramin, two representatives  
of the Parents Circle, a joint Israeli-  
Palestinian organization made up of more  
than 600 bereaved families, in a  
pre-recorded discussion. Their common  
bond is that they have lost a close family  
member to the conflict. Instead of  
choosing revenge, they chose  
a path of reconciliation.

7:45PM • Reception

8:15PM • Program with Parents Circle

9:30PM • Selichot service with  
Choir and AES Band



## THE NARROW BRIDGE FILM SCREENING & DISCUSSION WITH RABBI SIEGEL

Thursday, September 21  
7PM

This documentary explores the journeys  
of four people who, after searing pain,  
develop strengths they never had before.  
Despite fierce opposition these Israelis  
and Palestinians, who lost a child in the  
conflict, are building a grassroots movement  
and transforming their grief into a bridge  
for understanding and reconciliation.

A streaming link will be available to  
watch the film from home beginning  
noon on Wednesday, September 20  
through Thursday, September 21. A  
discussion with Rabbi Siegel will be held  
at 7PM on Thursday, September 21  
via Zoom. The zoom link will be sent  
to those who register for the film.

*Learn more and register for  
these programs and others at:*  
[ansheemet.org/elul](http://ansheemet.org/elul)

# Our 2023 AES Simchat Torah Honorees

## EREV SIMCHAT TORAH



**Scott Frazin**  
Hatan  
HaTorah

Scott is a portfolio manager at Corient Private Wealth (Formerly Gofen and Glossberg) and a CFA Charterholder. Scott currently serves as a Vice President on the Anshe Emet Synagogue board and is a director of the Judd Goldman Adaptive Sailing Foundation. Scott formerly served on the Jewish Council for Youth Services board and is a member of their Endowment Committee. Scott lives in Lakeview with his wife Dr. Marissa Cohler and their 2 children Maya and Benny.



**Noah Tennenbaum**  
Teen  
Honoree

Noah is a current Junior at Whitney M. Young Magnet High School and proud alum of Bernard Zell Anshe Emet Day School. He is a swimmer, diver and member of the water polo team at Whitney Young. Noah attends Camp Ramah in Wisconsin and is a talented guitarist. He has been nominated as a Jewish Star by Jewish Rock Radio and holds a regional board seat for CHUSY. Noah is a JUF Voices Alum and a member of the National Honor Society.



**Joy Horwich**  
Kallat  
Bereshit

Joy Baum Horwich hails as the longest standing member of Anshe Emet at 86 years. Her father, Sidney "Shimmy" Baum, was the first to plant roots at Anshe Emet and it has been a second home to Joy ever since. Joy is a trailblazer. She was a member of the inaugural Bat Mitzvah group Anshe Emet created in 1943 and has been an integral part of AES ever since. From teaching kindergarten at the Day School, to Torah study, to being a vibrant member of the community, Joy has made a strong impact on Jewish life at Anshe Emet. Joy and her husband of 62 years, Herbert Horwich, a pillar of the Jewish community in his own right, and a Chatan B'reishet honoree at Moriah Congregation, shared a love for Anshe Emet which enriched their lives together for years. If you don't see Joy at Anshe Emet you can find her honing her skills in the art world. Joy is an entrepreneur establishing her art gallery, Joy Horwich Gallery, in the early 1970's. She continues to be a stalwart in the art community and is currently in the art consulting business with her two daughters. But, of all her accomplishments, her greatest source of pride is her growing family. Joy is overwhelmed and grateful for this beautiful honor.



**Ayelet Lazar**  
Teen  
Honoree

Ayelet Lazar is a senior at Lane Tech High School. She enjoys dancing and has been part of a dance team for 8 years. She is also a madricha for the Anshe Emet Religious School.

## SIMCHAT TORAH



**Gabi Boros**  
Kallat  
HaTorah

Gabriella Boros was born in Jerusalem, Israel to Holocaust survivors. Her family immigrated to the US when she was young. A graduate of the University of Michigan School of Art, Gabriella has exhibited her woodblock prints nationally and internationally since 1986. She has completed three artist residencies and is a recipient of a State of Illinois Artist Grant. Her themes include the intersection of plants and humans and visual Midrash, sometimes, all in the same work.



**Isabelle Harari**  
Kallat  
Bereshit

Isabelle Harari is in her second year as one of the co-chairs for Anshe Emet's Rose Crown Minyan. She also organized this year's No Frills Purim Megillah reading, the Shavuot Hashkama service, and participated in Anshe Emet's first cohort of Resetting the Table. Isabelle enjoys working one on one with community members looking to get involved. She also loves creating warm and welcoming environments outside of Rose Crown, be it through cooking a delicious dinner for her co-op, or by curating just the right lighting for an open mic in their backyard. Isabelle feels truly moved to be receiving this honor from Anshe Emet.

# AES 150<sup>th</sup> Mosaic Project



Join esteemed artists Joani Rothenberg and Yael Buxbaum to place Italian glass tiles (tiling) on the painting that AES commissioned for this incredible historic occasion: the **AES 150<sup>th</sup> Anniversary**. Yael Buxbaum and Joani Rothenberg bring their creative genius and love of Judaism to every project they touch. The cornerstone of Anshe Emet is our incredible community and the true beauty of this mosaic project lies in the stories of the people engaged in the creative process. You'll hear about the different ways people got involved, the connections they made, and the impact this project had on their lives. And the best part? You'll be able to enjoy this work of art for years knowing that you were a part of something amazing. You'll be a part of a community experience that celebrates the ability of art to bring people together and strengthen communities.



Joani Rothenberg and Yael Buxbaum  
You can see Joani and Yael's work  
at [JOYAPUBLICART.COM](http://JOYAPUBLICART.COM)

## COME TO ANSHE EMET AND PLACE TILES DURING ANY OF THESE DATES:

**Monday, October 2**  
*Sundown*

**Tuesday, October 3**  
*Sukkot/AES Staff Meeting*

**Tuesday, October 3**  
*Sukkot/Men's Club*  
*Steaks and Shots*

**Wednesday, October 4**  
*Sukkot/Teens and Tiling*

**Thursday, October 5**  
*Sundown*

**Monday-Friday, October 9-13**  
*9AM - 5AM*

**Thursday, October 12**  
*YAD Mocktails,*  
*Mules, and Mosaic*

**Thursday, October 12**  
*AES Religious School*  
*Tacos & Teacher Event*

**Sunday, October 15**  
*9AM-Noon*  
*Tiling with the Religious School*

## Sisterhood

Sisterhood wishes everyone a  
Sweet, Happy and Healthy 5784!

We begin the year's programming on  
Thursday, October 5 with our **Annual  
Meeting: Sisterhood in the Sukkah**.  
During the evening we will participate  
in Anshe Emet's 150th Anniversary  
Mosaic Project.

Two additional events are in the works:  
our **Tu B'Shevat Women's Seder** on  
Sunday, January 21, 2024, and **Annual  
Sisterhood Shabbat**, on Saturday, February  
3, 2024. Please make a note about both!

Sisterhood is proud of ongoing  
programs including the **High School  
Grad Connection**, where we provide  
gift packages to AES High School  
graduates at Hanukkah and Passover;  
**Sisterhood's Kiddush Cup Program**  
for all AES B'nai Mitzvah; and **Torah  
Fund Tea** where we raise donations  
for **WLCJ's Scholarship Program**.

Our engaging **Book Group** recently  
announced its three Autumn selections  
including *Demon Copperhead* by  
Barbara Kingsolver. The group meets  
six times a year with a professional  
facilitator. To learn more please contact  
Judy Metzger at [hgmet1@aol.com](mailto:hgmet1@aol.com).

As an affiliate of Women's League for  
Conservative Judaism, we encourage  
our members and prospective members  
visit their website: [wlcj.org](http://wlcj.org).

### **Shanah Tovah!**

Deborah Gubin and Marcie Marcovitz  
Co-Presidents



## Men's Club

We would be remiss if we did not mention the engaging programs Sisterhood sponsored over the Summer: **Comfort Care Kit Assembly** in support of reproductive rights; **Women's League's Convention**; and **Sunday in the Park with Sisterhood**:



The Anshe Emet Synagogue Men's Club hopes you, and your family and friends, had a terrific summer season and we are pleased to offer you many programs that are planned for your enjoyment! We hope you are available to join us as we transition into the High Holy Days season with our diverse programming.

**WHEN YOU RENEW YOUR ANSHE EMET SYNAGOGUE MEMBERSHIP**, we hope you checked the box indicating your intent to maintain or begin your Men's Club membership for 2023-2024/5784 for the \$36.00 fee. If you are not yet a Men's Club member, please contact Alan Mintz at [mintzad@gmail.com](mailto:mintzad@gmail.com), Gregg Pollack at [gdp5607@gmail.com](mailto:gdp5607@gmail.com), or Barry Seeskin at [bseeskin@gmail.com](mailto:bseeskin@gmail.com) for further information.

**PICKLEBALL:** Join in the exciting physical and social action on selected Wednesdays of every month from 6:00-8:30PM and enjoy the games and camaraderie. We welcome all members of our Men's Club. Look for updated registration information regularly in the weekly synagogue announcements.

**KAYAKING/CANOEING:** Join our hearty "river travelers" on Sunday, September 10 at 8:30AM at the Boathouse, 3400 N. Rockwell Street, Chicago, IL 60618, for bagels and cream cheese, hot chocolate, and coffee (all provided by Men's Club for your delight) prior to launching our kayaks and canoes. Fees are \$20-\$30 per boat rental (pay onsite at the launch). This program is open to all AES members and their families, including children 10 years and older.

**SAVE THE DATE:** Steak and Shots in the Sukkah, Tuesday evening, October 3 at 6:30PM. This year, we are honoring our newest member of the clergy, Rabbi Benjy Forester, and his wife, Emily. This event sells out quickly so look for the registration information in the synagogue's announcements and Shabbat bulletins.

**KRISTALLNACHT PROGRAM:** This year commemorates the 85th anniversary of the destructive events of Kristallnacht on November 9 and 10, 1938, and we urge you to join us for this powerful and meaningful program, this year on Thursday evening, November 9 at 7PM. Further information will be forthcoming over the next two months.

Look for our award-winning Hearing Men's Voices programs to resume in the autumn, providing opportunities to share in discussions relating to men's issues in our ever changing and challenging world.

We are instituting programs on photography and the Torah and on networking with dates to follow. Information will be available through synagogue weekly announcements.

## USHERING DURING THE HIGH HOLY DAYS



Every year, the Men's Club and Sisterhood share in assisting with the ushering of our services for Rosh Hashanah, and Yom Kippur. The synagogue clergy and leadership are expecting many more attendees this year and we would like to ensure that everyone is shown respect in maintaining decorum and finding their seats in the various services conducted on our campus. Please scan the QR code and sign up for at least one, if not more, slots so that we can accommodate our membership's needs.

Please contact Hannah Jarvis at [hjarvis@ansheemet.org](mailto:hjarvis@ansheemet.org) for further information.

# Mazel Tov to Our AES B'nai Mitzvah Students!

## SEPTEMBER 2023



**Orli Lanski**  
Daughter of Ariadna Cymet Lanski and Aaron Lanski  
September 2, 2023



**Jesse Sager**  
Son of Jordana and Adam Sager  
September 9, 2023



**Simon Shapiro**  
Son of Naomi Blumberg and Joey Shapiro  
September 4, 2023



**Noa Raisher**  
Daughter of Emily and James Raisher  
September 30, 2023

## OCTOBER 2023



**Simon Katz**  
Son of Hope and Benjamin Katz  
October 14, 2023



**Joe Wieder**  
Son of Elisheva Beller and Paul Wieder  
October 14, 2023

**Eden Auerbach**  
Daughter of Leor and Simon Auerbach  
October 21, 2023



## AES Catering Is Here for You.

Shivas and funerals are treated appropriately and honored properly at Anshe Emet. Our professional hospitality and catering staff are here to handle all the details so that you can focus on the occasion, your family, and your friends.

Here are some of the services available to you and your family:

- Host Shiva at AES
- Order and Pick-up fresh food trays from AES
- Order AES food trays for delivery to homes within a 10 mile radius (+ delivery fee; orders should be placed (3) three days in advance)
- AES Tray options include: Bagels and Lox, Assorted Pastries, Fresh Fruit and Berries display, deli meat trays, multiple *a-la-carte* options

Anshe Emet  
Synagogue

1873 • 2023

150

Contact Kim Carter, Director of Hospitality, to discuss your order: [kcarter@ansheemet.org](mailto:kcarter@ansheemet.org) • 773.868.5119

# AES Community Announcements

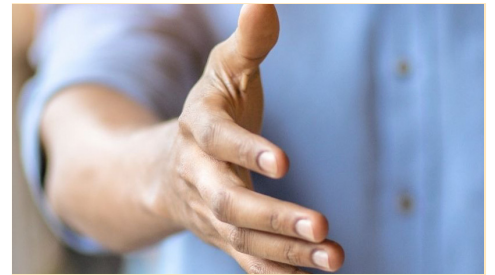
## HaZaK FOR Seniors

Mondays at 1PM (CST)

Bring a friend in person or feel free to join in your time zone, coast-to-coast. If you come in person, there is lunch offered at 12:30PM.

Cantor Berke will be teaching the **Walking With Justice curriculum** from American Jewish University, which will provoke discussion on **Social Justice** in our sources, our responsibilities to each other and choices we may make related to areas such as food and the environment.

**Visit us online** to register for lunch, or to join us via Zoom, if you will not be participating in person.



## Anshe Emet's Volunteer Corps:

We are looking for members who are passionate about volunteerism and Tikkun Olam to **join Anshe Emet's Volunteer Corps**. Throughout the year, there are several opportunities for our congregants to lend a helping hand within our community.

If you are interested in being on the contact list, please contact

**Hannah Jarvis** at [hjarvis@ansheemet.org](mailto:hjarvis@ansheemet.org) or **773.868.5143**.

## Sincerest Condolences

Anshe Emet expresses its sincerest condolences to the families of:

Myra Sue "Susi" Moglowsky  
Marshall "Mickey" Becker  
Elton Carl Fransen  
Ruth J. Oppenheimer  
Andrew Levin  
Howard Nagelberg  
Frieda Briskin Kohn  
Steven J. Turner  
Kay Walden Stone  
Roslyn Must Levey  
Lawrence "Larry" Salba  
Robin Bea Elkaim  
Mildred Irene Ginsburgh  
Edith Klehr  
David H. Greenstein

## Sponsorship Opportunities

Anshe Emet is blessed to celebrate many special occasions, s'machot, in our community. Anshe Emet is now offering several sponsorship opportunities for you to consider in memory or honor of someone you love or in celebration of a simcha. Please fill out our form (the link is listed below) or visit our website to make arrangements. For any questions, please contact Mimi Weisberg at [mweisberg@ansheemet.org](mailto:mweisberg@ansheemet.org) or **773.868.5123**.

Fill out our form at:  
[ansheemet.org/sponsorships](https://www.ansheemet.org/sponsorships)

## Monthly Online Bereavement Group

September 25 & October 23  
7:30PM via Zoom

Please join us online for our monthly support group for adults who have experienced the death of a loved one within the past two years.

Learn more and join us at:

[ansheemet.org/bereavementgroup](https://www.ansheemet.org/bereavementgroup)

## Misheberach List

If you would like to have a name placed on the misheberach (prayer for healing) list, **contact our clergy offices at 773.868.5120**. Names will be kept on the list for two weeks unless otherwise requested.

# Your Donations — *Thank You!*

## GENERAL DONATIONS

### SIMON SYNAGOGUE FUND

Man fai Li

#### In honor Of:

FRAN ABRAMSON:

Gerard & Linda Nussbaum

BARRY BALIK:

Gerard & Linda Nussbaum

JOHN RAGIR:

Gerard & Linda Nussbaum

#### In memory Of:

ROSLYN MUST-LEVEY:

Alan Landsberg & Robert Beal

HOWARD NAGELBERG: Deborah Page

ARNOLD E. VIDIS: Esahr Pildis

ORA FAGAN: Benjamin Siegel

### GRETEL & RUDY SIMON

#### HOLOCAUST FUND

#### In honor of:

NINA BELL'S SPECIAL

BIRTHDAY: Joyce Asher

THEODORA RINDNER

BAT MITZVAH: Joyce Asher

### SUSTAINING FUND

#### In honor of:

RABBI BENJY FORESTER:

Avidan Halivni

MARLA GORDON: Patricia Hartman

#### In memory of:

ROSLYN MUST-LEVEY: Anshe

Emet Bridge Sisterhood

STEVEN J. TURNER: Anshe

Emet Men's Club

ROSLYN MUST-LEVEY: Anshe Emet Staff

SUSI MOGLOWSKY: Margaret Deitch

ROSLYN MUST-LEVEY: Boni Fine

CAROL KOHN: Arthur

Friedson & Nancy Kohn

ROSE GINSBURG & BERNARD

LEVY: Steve & Alice Ginsburgh

RENEE GERGER: Cynthia Goldberg

ROSLYN MUST-LEVEY: Abraham

Steinberg & Candice Goldstein

ROSLYN MUST-LEVEY: Marla Gordon

ROSLYN MUST-LEVEY:

David & Gail Gotskind

ROSLYN MUST-LEVEY: Stuart Grauer

HOWARD NAGELBERG:

Scott Hite & Marsie Hass

STEVE TURNER: Joy Horwich

ROSLYN MUST-LEVEY: Joy Horwich

HOWARD NAGELBERG: Nancy Kreiter

STEVE TURNER: Alan

Landsberg & Robert Beal

ROSLYN MUST-LEVEY: Roz Lax

ROSLYN MUST-LEVEY: Jane Lippow

BESSIE HOLZMAN: Jane Lippow

MILTON HOLZMAN: Jane Lippow

SYLVIA LIPPOW: Jane Lippow

BELLE GARFINKEL: Jane Lippow

HELEN HOLZMAN: Jane Lippow

ROSLYN MUST-LEVEY:

Benjamin & Carol Mackoff

ROSLYN MUST-LEVEY: Gerard

& Linda Nussbaum

HOWARD NAGELBERG:

Candace Reeder

ROSLYN MUST-LEVEY:

Neil & Adrienne Schwartz

ROSLYN MUST-LEVY:

Barry & Elaine Seeskin

STEVE TURNER: Barry & Elaine Seeskin

ORA FAGAN: Barry & Elaine Seeskin

LARRY HORWITZ: Barry

& Elaine Seeskin

ROSLYN MUST-LEVEY: Jay

& Naomi Stonehill

ROSLYN MUST-LEVEY: Dianne Tesler

ROSLYN MUST-LEVEY:

Gary Wigoda & Barbara Gressel

STEVE TURNER:

Gary Wigoda & Barbara Gressel

ROSLYN MUST-LEVEY:

Alan & Jeanette Zemsky

ROSE GINSBURGH:

Alan & Jeanette Zemsky

### KIDDUSH LUNCHEON FUND

Howard & Tracy Ankin

Jake & Merav Bennett

Paul Berkowitz & Carolyn Erikson

Elliot Cohen

Michael Cohen & Lisa Goldberg

Stuart Fagan

Eduardo Frajman & Marla Clayman

Scott Hite & Marsie Hass

Donald Honchell & Susan Horn

Ruth Kahn

Michael & Mimi G Landau

Roz Lax

Marc Perper & Marianne Katz-Perper

Neil & Tamar Rosenberg

David & Pamela Simon

Dianne Tesler

Seymour & Penny Turner

Aaron Zaretsky & Carrie Campion

#### In honor of:

DREW ROSENBERG GRADUATION:

Helene Brodsky Brody

EMILY & BENJY'S AUF RUF:

Scott Forester

KATE HENNINGER'S

CONVERSION: Philip Rosen

#### In memory of:

RUTH OPPENHEIMER: Marla Gordon

### YAHREZEIT FUND

Keith & Sima Esses

Beryl Satter

#### In memory of:

LAUREN ROSENBLATT: Fran Abramson

SYLVIA BALIK: Barry & Marlene Balik

DANIEL M SCHAB: Dena Balzano

NATHAN MICHAELS: Dena Balzano

GOLDIE BEERMANN & JACK

RUBENS: Miles & Helene Beermann

ROSLYN MUST-LEVEY:

Neil & Jill Benchell

ANDREW LEVIN:

John Tapper & Carolyn Bronstein

LUCILE GOLDBERG:

Michael Cohen & Lisa Goldberg

JOANN WEXLER, DEBORAH KEHINDE

ADEGBEMI, AND SULATUIBIDUN

BABATUNDE: Shade Dongo

MANNY EAGLE:

Ronald Lachman & Jamie Eagle

JOSEPH L. GIDWITZ: Betsy Gidwitz

GERALD & FANNY GOLDENBERG:

Cynthia Goldberg

JOE FELSHER: Avrom & Dorie Goldstein

TERESE FOSTER: Susan Goldstein

HAROLD GOLDSTEIN: Susan Goldstein

SALLY GOODGOLD:

Jay & Karen Goodgold

MORTON M. GRASS:

Stuart E. & Andrea B Grass

MANNY LAX: Roz Lax

ALLAN LEVIN: Howard & Beryl Levin

JOSEPH LEVIN: Howard & Beryl Levin

LARRY SCHECTER & ANITA NEWMAN:

Steven Mayer & Carole Schecter

STEVE MEDOW: David Medow

& Barbara Bernstein

BESSIE HEYMAN: Ronald & Susan Nick

ROSLYN MUST-LEVEY:

David Haase & Sharon Perlman

RACHEL PRIVOROTSKAYA AND

MENDEL PINSKY: Sarra Privorotskaya

NANCY RAISHER & FRANK

RAISHER: James & Emily Raisher

LEO ROSENBLOOM:  
Esther Rosenbloom  
MARY ROSENBLOOM:  
Esther Rosenbloom  
HENRY SOKOLOW, MERRIT  
SOKOLOW, AND HAROLD SOKOLOW:  
David & Marim Schwartz  
SELMA CASSELL, LOVING MOTHER:  
Brant Serxner & Cathy Cassell-Serxner  
SELMA BRODSKY, LOVING AUNT:  
Brant Serxner & Cathy Cassell-Serxner  
GERALD BOGEN, LOVING UNCLE:  
Brant Serxner & Cathy Cassell-Serxner  
HARVEY MEDVIN:  
Marc & Arla Silverstein  
HOWARD NAGELBERG:  
Sabrina Spitznagle  
ADAM DANIEL GOLDBERG  
COHEN: Judy-Anne Goldman,  
Jennifer Tyson, and Ruth Isaac  
FLORA SOBEL:  
Michael & Susan Weininger  
RUTH SCOTT: Gary Wigoda  
& Barbara Gressel

#### **RELIGIOUS SCHOOL SCHOLARSHIP FUND**

Melody Russ & Jerry Elliott

#### **REFUGEE RESETTLEMENT FUND**

Donald Honchell & Susan Horn

##### **In memory of:**

HOWARD NAGELBERG:  
Ballis Household

#### **KID'S FUND**

Jay & Karen Goodgold  
David & Andrea Rubenstein  
Vinay Sehgal

##### **In honor of:**

BARRY WIMPFHEIMER'S 50TH  
BIRTHDAY: Meredith Grossman  
Anders & Daren Anders  
GILI'S NAMING: Joan S Field

##### **In memory of:**

ROSLYN MUST-LEVEY:  
Stewart & Karen Martin

#### **ISRAEL PROGRAMMING FUND**

##### **In memory of:**

ROSLYN MUST-LEVEY: Cindy Friedman  
ROSLYN MUST-LEVEY: Arthur  
Friedson & Nancy Kohn  
HOWARD NAGELBERG:  
Iris & Billy Garmisa

ROSLYN MUST LEVEY:  
Aaron Kamins & Julie Ann Sklaver  
ROSLYN MUST-LEVEY:  
Avner & Joan Porat  
ROSLYN MUST LEVEY:  
Don & Ellyn Robinson  
ROSLYN MUST-LEVEY:  
Steven & Judy Slivnick  
ROSLYN MUST LEVEY: Andrea Yablon

#### **AZ YASHIR MUSIC FUND FOR THE FUTURE**

##### **In honor of:**

HAZZAN ALBERTO MIZRAHI:  
Diana Turner

##### **In memory of:**

RENEE SCHWARTZ: Jennifer Ellin  
STEVE TURNER: Diana Turner

#### **COMMUNITY ASSISTANCE FUND**

##### **In honor of:**

RABBI BENJY FORESTER  
AND EMILY SCHWARTZ'S  
WEDDING: Perry Hoffman

##### **In memory of:**

ROSLYN MUST-LEVEY: Fran Abramson  
ROSLYN MUST-LEVEY:  
Barry & Marlene Balik  
IRVING ABRAMSON: Michael  
Cohen & Lisa Goldberg  
ROSLYN MUST-LEVEY: Michael  
Cohen & Lisa Goldberg  
ROSLYN MUST-LEVEY: Brian  
& Marsha Nagorsky  
FRIEDA BRISKIN: Sharon Rosen  
ROSLYN MUST-LEVEY: Sharon Rosen  
ROSLYN MUST-LEVEY: Andrew  
Rosenfeld & Rhonda Singer

#### **FRIENDS OF JTS**

Howard & Tracy Ankin  
Paul Berkowitz & Carolyn Erikson  
Brian & Irene Caminer  
Elliot Cohen  
Michael Cohen & Lisa Goldberg  
Edward & Ruth Copeland  
Eduardo Frajman & Marla Clayman  
Arthur Friedson & Nancy Kohn  
Marla Gordon  
Michael & Mimi G Landau  
Roz Lax  
Jay Lewkowitz  
Jane Lippow  
David Medow & Barbara Bernstein  
Marc Perper & Marianne Katz-Perper  
Neil & Tamar Rosenberg

Ralph & Lynne Schatz  
David & Pamela Simon  
Dianne Tesler  
Seymour & Penny Turner  
Michael & Susan Weininger

#### **CLERGY DISCRETIONARY DONATIONS**

##### **RABBI MICHAEL S. SIEGEL**

Matthew & Deborah Brown  
Harold Hirshman & Lorie Chaiten  
Mitzvah Memorial Funerals

##### **In honor of:**

RABBI SIEGEL:  
Glenn & Michelle Holland  
JACOB'S SAFE RETURN FROM  
HIS TRAVELS AND SAM'S RECENT  
MULTIPLE ACHIEVEMENTS:  
Arnold & Judy Horwich  
RABBI SIEGEL'S KINDNESS:  
Sandy Nagelberg

##### **In memory of:**

STEVE TURNER: Barry & Marlene Balik  
ORA FAGAN: Steve & Alice Ginsburgh  
LD CAPLAN: Richard & Andrea Grostern  
STEVE TURNER: Jay Lewkowitz  
MICKEY: Richard & Susan Rosenstein  
HOWARD NAGELBERG:  
Michael & Sara Sher  
STEVEN J. TURNER: Diana Turner

##### **CANTOR RACHEL BROOK**

Daniel Herschler  
Susan & Jeffrey Stern

##### **In honor of:**

THE BABY NAMING OF AVERY  
DIAMOND: Jason & Sarah Diamond

##### **CANTOR LIZ BERKE**

Brett & Christy Rosenstein

##### **In honor of:**

THE KINDNESS OF LIZ BERKE:  
Seymour & Maureen Levy  
THE MARRIAGE OF MARISSA  
LEVY & MICHAEL KUO:  
Seymour & Maureen Levy

##### **In memory of:**

RUTH GRAUER: Edward  
& Elaine Pierson  
CHARLOTTE HILL: Esther Joy Schwartz  
MORRIS S. HILL: Esther Joy Schwartz

##### **RABBI D'ROR CHANKIN-GOULD**

Stan & Ruthie Friedell

##### **In honor of:**

CRAIG ZUCKER & JOSEPH ASH:  
Lee Zucker & Whitney Ash  
BARRY & MARLENE BALIK'S 50TH  
ANNIVERSARY: Barry & Marlene Balik  
GABE & ASHER BORKOWSKY  
LANDLER'S B'NAI MITZVAH:  
Anthony & Sharon Landler  
SIMON'S BRIS: Suzann Simon

# Your Donations — Thank You!

Contributions listed  
were received between  
June 6, 2023 - August 1, 2023

## SUSTAINING FUND TREE OF LIFE

### NER TAMID

\$25,000+

Joan & Linda Friedman  
Michael & Mary Silver

### ARON HA'KODESH

\$18,000+

Norman & Virginia Bobins  
Jim & Julie Coffman  
Tony & Laura Davis  
Robert & Carlen Katz  
Cheryl Kreiter  
Stephanie & Jeremy Liss  
Goldie Wolfe-Miller & Jack Miller  
Ami & Miki Pissetzky  
Phillip & Nancy Resnick  
Arnold & Kimberly Rubin  
Gregg Silver & Joanne Moffic-Silver  
Howard & Judy Tullman

### ETZ CHAYIM

\$10,000+

David Brown & Suzanne Muchin  
Chris Coetzee & Lindy Hirschsohn  
The Crown Family  
Steve Durchslag  
Stuart Fagan in Memory of  
Ora Simcha Fagan  
Betsy Gidwitz  
Jacqueline Gilbert  
Phillip Goldstick  
Jay & Karen Goodgold  
Marla Gordon  
Ruth Kahn  
Edwin & Susan Katz  
Ben & Amanda Kleinman  
Roz Lax  
Donald & Elaine Levinson  
Susan Levinson  
Barry Malkin & Jodi Block  
Judd & Katherine Malkin  
Avner & Joan Porat  
Adam Rifkin & Laura Neiman Rifkin  
David & Jamie Schwartz  
Allan & Bonnie Sweet

### MAGEN

\$3,600+

Michael & Helen Arkes  
Donald & Lee Geller  
Debra Goldstein & David Cohen  
Marc & Amy Gould  
Lewis Greenbaum & Rosalyn Kagan  
Ron & Gail Kahn  
Jay Lewkowicz  
David Medow & Barbara Bernstein  
Sam & Hilary Sallerson  
Ralph & Lynne Schatz  
Seymour & Penny Turner

### RIMONIM

\$1,800+

Keith Alperin & Elizabeth Lippow  
Stanley & Susan Bedows

Michael Cohen & Lisa Goldberg  
Phil Dunn & Jill Stein  
Jacqueline Gilbert  
Martin Hauselman  
Arnold & Judy Horwich  
Jane Lippow  
Sandy Nagelberg  
Richard & Susan Rosenstein  
Phillip Stern  
& Leslie Markman Stern  
Michael & Susan Weininger

### KLAF

\$1,080+

Dena Balzano  
Alan & Nancy Berry  
Stanley Dreyfuss & Anita Shore  
Jared & Barbi Green  
Michael & Jill Rosenbaum  
Ed & Annette Salomon  
Barry & Elaine Seeskin

### OTIOT

\$540+

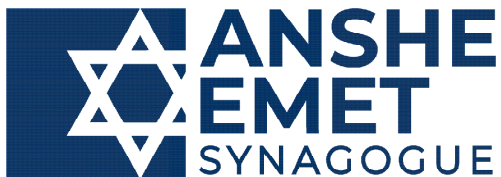
Izi & Amrita Aviyente  
Timothy Bishop  
& Helene Greenwald  
Rickey & Marla Briskman  
Brian & Irene Caminer  
Glenn & Lauren Chernyak  
Allen & Elaine Cizner  
Elliot Cohen  
Adam Cooper  
Rosanne Diamond  
Larry & Marilyn Fields  
Arthur Friedson & Nancy Kohn  
Barry & Merle Gross  
Malcolm Haar & Brian Grossman  
Donald Honchell & Susan Horn  
Donna Kahan  
Tom Opferman & Sandra Kirmeyer  
Manus Kraff  
Jay Leib & Lori Rosen  
Saralyn Levine  
Thomas Platt & Carolyn Notkoff  
Ken & Stephani Perlmutter  
Neil & Tamar Rosenberg  
Alan & Jan Schwartz  
Stephen  
& Samuel Schwartz-Fenwick  
John & Judith Shear

### SOFRIM

\$0-\$539

Cappy Abraham & Allison Lerman Dan  
Anshe Emet Bridge Sisterhood  
Anshe Emet Men's Club  
Anshe Emet Staff  
Barry & Erin Aprison  
Barry & Marlene Balik  
Dayna Bender  
Suzi Birz  
Neal & Frances Block  
Julian Blumenthal

Leemor Chaplin  
Terry G. Chapman & Susan Spier Chapman  
Frances Chukerman  
Edward & Ruth Copeland  
Margaret Deitch  
Michael Dorfman & Beth Cohen-Dorfman  
Milton & Sydney Esbitt  
Irv Faber & Paula Litt  
Lois Feinberg  
Boni Fine  
Eduardo Frajman & Marla Clayman  
Dennis & Daryl Galinsky  
Steve & Alice Ginsburgh  
Cynthia Goldberg  
Abraham Steinberg & Candice Goldstein  
Marla Gordon  
David & Gail Gotskind  
Stuart Grauer  
Avidan Halivni  
Patricia Hartman  
Andrew Heisler & Hayley Bemel  
Scott Hite & Marsie Hass  
Dalia Hoffman  
Joy Horwich  
Larry & Sheara Horwich  
Yishai Kamin & Sahar Segal  
Freddrika & Bonnie Kammer  
Wendy Kline  
Nancy Kreiter  
Stephen & Marjorie Kulp  
Michael & Mimi G. Landau  
Alan Landsberg & Robert Beal  
Cary Latimer & Julie Lasin  
Roz Lax  
Vitaly Rindner & Allison Leviton  
Roselind Lindau  
Benjamin & Carol Mackoff  
Lee & Debbie Merovitz  
Josh & Alexa Micley  
Frank Miller & Michelle Naidich  
Jeff Horvitz & Judy Mischel  
Jonathan & Christine Norton  
Gerard & Linda Nussbaum  
Howard Oppenheimer  
& Julie Ross Oppenheimer  
Shelly Parker  
Marc Perper & Marianne Katz-Perper  
Jessica Pogrud Choplin  
& Debra Pogrud Stark  
John Pomeranz & Renee D. Stein  
Brian & Tracy Portnoy  
Candace Reeder  
Sharon Rosen  
Mark & Ayala Rothmann  
Jay & Cindy Rudman  
Neil & Adrienne Schwartz  
Samuel & Sharon Schwartz  
Zachary & Lindsey Seeskin  
Matthew & Jennifer Seidner  
Brant Serxner & Cathy Cassell-Serxner  
David Shaw & Laurie Gordon-Shaw  
Marc & Arla Silverstein  
Andrew Rosenfeld & Rhonda Singer  
Jay & Naomi Stonehill  
Judith Stotland  
Dianne Tesler  
Fredrick & Michelle Weber  
Gary Wigoda & Barbara Gressel  
Linda Woloshin  
Jeffrey Lewis & Shari Young Lewis  
Alan & Jeanette Zemsky



3751 N. Broadway Ave.  
Chicago, IL. 60613

CHANGE SERVICE REQUESTED

PRESORT  
1ST CLASS MAIL  
U.S. Postage  
PAID  
Skokie, IL. 60077  
Permit No. 269

[ansheemet.org](https://ansheemet.org)

773.281.1423

Affiliated with the United Synagogue of Conservative Judaism

Anshe Emet  
Synagogue

1873 • 2023

150 

HIGH  
HOLY  
DAYS



5784 • 2023



[ANSHEEMET.ORG/HHD](https://ansheemet.org/hhd)