

AnsheEmet monthly

**LEARN ABOUT OUR
SPECIAL EVENTS FOR
MLK WEEKEND**
PAGE 4

**YOUNG FAMILY &
YOUTH NEWS**
PAGES 10-11

**LEARN ABOUT
SISTERHOOD SHABBAT**
PAGES 12-13

**JEWISH DISABILITY
AWARENESS AND
INCLUSION MONTH
AT ANSHE EMET**
PAGE 13



ANNOUNCING THE ESTABLISHMENT OF THE **GRODZIN** DIRECTOR OF EDUCATIONAL INNOVATION

by **Michael S. Siegel**
Senior Rabbi, The Norman Asher Rabbinic Chair
msiegel@ansheemet.org



Sam and Roz Grodzin are extraordinary people who exemplify the ideals of our Anshe Emet family. Together, they are a welcoming presence in our community.

Roz is a nationally recognized actress and has shared her prodigious talents with our congregation. They take advantage of all that the synagogue has to offer, from Shabbat services to our wide array of programs. However, their passion is study and Sam and Roz are always present.

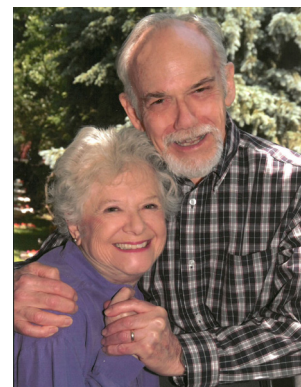
What sets them apart is that they are active participants in the class, asking thoughtful and penetrating questions. Sam and Roz have made an extraordinary gift of \$1 million to Anshe Emet to establish The Grodzin Director of Educational Innovation. They've done this in order to ensure that we will be able to offer the best and most innovative Jewish educational opportunities to our young people.

Sam and Roz have been deeply impressed with the work of our LaAtid Task Force. Under the leadership of Rabbi D'ror Chankin-Gould, the result of this multi-year project is one of the most thoughtful and creative supplemental educational programs in the country. In order to implement this special curriculum, we have created a new position for educational innovation. Since coming to Anshe Emet, Emily Schoerning, PhD, has done a remarkable job of working with our educational committee, teachers, students, and parents in order to fulfill the potential of a true learning community. The Grodzin Director of Educational Innovation will ensure that the significant work and investment that our congregation has made will be supported today and into the future.

The story is told of the older man who explained the reason that he was planting a carob tree which takes seventy years to

produce fruit: "Those who came before me planted trees. Just as they planted trees for me, I am planting trees for my children and grandchildren." Sam and Roz Grodzin are modern exemplars of this story, ensuring that our children will be able to enjoy the fruit of Aitzei Hayim, the trees of Jewish life and knowledge, for generations to come.

Todah Rabbah!



Sam & Roz Grodzin

WELCOME TO THE INAUGURAL ISSUE OF THE NEW AES MONTHLY!



We've been listening to your input and working to re-imagine and re-design the newsletter to make it more timely, more modern and more reflective of the vibrancy and diversity of the AES community. It is designed to give you a taste of all that's going on at the synagogue and then let you explore your individual areas of interest further on our website: ansheemet.org.

Boni Fine

**We welcome your feedback and your ideas,
so let us know what you think:**

BONI FINE

Executive Director
bfine@ansheemet.org
773.868.5115

BRIAN SCHMIDT

Communications Coordinator
bschmidt@ansheemet.org
773.868.5114



THIS MONTH IN ANSHE EMET HISTORY...

Anshe Emet has a long history of supporting Civil Rights and standing for equality and justice for all people. In the winter of 1965, Anshe Emet Sr. Rabbi, Seymour J. Cohen (right), then the president of the Synagogue Council of America, presented the Council's Judaism and World Peace Award to Civil Rights leader Martin Luther King, Jr. (center), alongside Jewish Theologian, Rabbi Abraham Joshua Heschel (left).

In presenting the award, Rabbi Cohen declared: "We honor Dr. King's personal courage, responsible leadership and dedication to prophetic ideals, and we reaffirm the commitment of the Jewish religious community to the struggle...for justice and equality."

This declaration holds true today. See page 4 to learn how Anshe Emet will celebrate MLK weekend this year as we continue to honor Dr. King's legacy.



WE'RE HERE FOR YOU!

Interested in becoming a member? Want to learn more about our wide ranging programming?

Amy Karp

@ 773.868.5139
akarp@ansheemet.org

Looking to have a catered event or party at Anshe Emet?

Kim Carter

@ 773.868.5119
kcarter@ansheemet.org

Like to make a donation in support of Anshe Emet or to learn about our Dor L'Dor Society?

Mimi Weisberg

@ 773.868.5123
mweisberg@ansheemet.org

Are you interested in getting your young family engaged in fun community programming?

Max Handelman

@ 773.868.5121
mhandelman@ansheemet.org

Tell us about your experiences at Anshe Emet—we want to hear from you!

Brian Schmidt

@ 773.868.5114
bschmidt@ansheemet.org

ANSHE EMET CONFIDENTIAL ASSISTANCE PROGRAM TO HELP MEMBERS THROUGH TOUGH FINANCIAL TIMES

If you are an Anshe Emet member experiencing financial hardship, we may be able to assist you.

Contact our Assistance Program Coordinator directly at assistance@AnsheEmet.org or 773.868.5133

for further information.
All information exchanged will be completely confidential.

PHOTOS FROM OUR RECENT 4TH ANNUAL LIGHT & LATKES CELEBRATION

View the full set online at AnsheEmet.org





A SPECIAL KEHILLAH

by Arthur Friedson
President
art.friedson@gmail.com

Sitting on the bimah each week has opened my eyes to just how amazing our kehillah really is. The thing about our kehillah is that, at any given moment, something wonderful is happening.

Think about the b'nai mitzvah we get to share with excited families nearly every week. While the service itself provides consistency, there are wildly different stand-out moments from week to week. Like the musical prodigy from Amsterdam who came to our kehillah for his bar mitzvah because of a strong personal connection to Hazzan and Debbie Mizrahi. Or the first cousins who became b'nai mitzvah together, their mothers—sisters—taking turns reading Torah as well. B'nai mitzvah come in all sizes and from all kinds of families, but the thing about our kehillah is that they all feel comfortable and

welcomed here.

Think about weddings and wedding anniversaries. The thing about our kehillah is that on any given Shabbat, you're likely to see an auf ruf for a couple about to be married just one aliya after a couple who are celebrating their 50th or 60th anniversary. And wait an aliya or two more and you're likely to see a couple celebrating a single-digit anniversary together in shul to

"The thing about our kehillah is that ... all feel comfortable and welcomed here."

name their baby.

And yes, there are funerals. Some are big celebrations of life played to a packed house, and some are for congregants who have no family at all. The thing about our kehillah is that we show up for both of them. That's what makes us special.

Art Friedson



MIDWEST REGION ANNUAL FJMC MAN & YOUTH OF THE YEAR AWARDS DINNER

MARCH 3 AT 5:30 PM
ANSHE EMET SYNAGOGUE

Mark your calendar for this major annual event taking place—for the first time—at Anshe Emet!

We hope you will join us to host our Midwest Region honorees and guests, and to applaud our own special Synagogue honorees:

Man of the Year **Gilaad Matar** Youth of the Year **Gabriel Kosmacher**



**Registration coming soon—
This evening is not to be missed!**

To learn more about this and our other events, visit:
ansheemet.org/mensclub

Celebrate the Sweetness of Anshe Emet

MAKE A GIFT THAT LASTS TO A SYNAGOGUE THAT MAKES A DIFFERENCE

BY MAKING A LEGACY COMMITMENT YOU:

Express values instilled in you by your parents, grandparents and loved ones.
Perpetuate Jewish traditions you cherish.
Preserve programs and organizations that support Jewish life in Chicago.

To learn how to leave a legacy of love contact Mimi Weisberg:
(773) 868-5123 | mweisberg@ansheemet.org



"As my parents planted for me before I was born, so do I plant for those who will come after me." —Talmud

Co-Chairs of the Dor L'Dor Society:
Jay Goodgold and Susan Weininger

Dor L'Dor
SOCIETY

CHRYSLER
JewishLegacy
OF METROPOLITAN CHICAGO



ANOTHER KIND OF SLAVERY, ANOTHER KIND OF FREEDOM: ADDICTION & RECOVERY IN THE JEWISH COMMUNITY

AES welcomes Rabbi Mark Borovitz, senior rabbi of Beit T'Shuvah, a Jewish addiction treatment center and synagogue in LA, who will speak to our congregation the first weekend in March.

FRIDAY, MARCH 1

Rabbi Borovitz will join YAD and will speak after service & dinner.

SATURDAY, MARCH 2

Rabbi Borovitz will give the D'var Torah during morning Shabbat services in the sanctuary. He will also lead a post-Kiddush discussion on addiction.

HONORING MLK TAKING ACTION TO COMMEMORATE A LEGACY

by David Russo
Rabbi, Anshe Emet Synagogue
drusso@ansheemet.org

At Anshe Emet, we don't believe that Dr. Martin Luther King, Jr. weekend is "a weekend off." We believe that it is our civic duty to commemorate the legacy of Dr. King by taking action. So every day, leading up to Martin Luther King Jr. Day on Jan. 21, Anshe Emet will offer opportunities for you to learn and engage yourself in the community.

On Friday, January 18, Shabbat Shelanu will welcome Prof. Christopher Benson & Rev. Wheeler Parker, the cousin and best friend of Emmett Till, who will share memories of the slain historic figure. Pro-neg will begin at 6:30pm followed by an abbreviated Shabbat service.

Afterwards Prof. Benson, Rev. Parker and Rabbi Siegel will join in a discussion.

Also, Na'aseh, Anshe Emet's social action committee, will offer you a chance to think about how you can support the people who are most vulnerable in our communities by posting links and volunteer opportunities on Facebook:

[#naasehweekofaction](#),
[#weareansheemet](#)



"We believe that it is our civic duty to commemorate the legacy of Dr. King by taking action."

On Shabbat morning of MLK weekend we will hear from Chloe Phoenix and Simon Adams, members of last year's Let's Get Together cohort. Let's Get Together brings African American and Jewish teens together on a journey to explore our shared history in the Civil Rights

movement by visiting historically significant sites in Memphis, Little Rock, St. Louis, and Springfield. The group held its first trip last year, with a second scheduled for this spring. Chloe and Simon will give the D'var Torah on Saturday morning, January 19, in the main sanctuary.

During that service we will also read a speech of Dr. King's, using the musical trope of the Haftarah readings; reading his words as a prophetic text.

David Russo

"Let's Get Together presented us with an experience to make new friends [and to] learn about each other's culture/religion. We all bonded...and were open to share information and understand more about our shared histories."

- Sydney Green

Let's Get Together Participant

Photos from the First

LET'S GET TOGETHER Interfaith Trip



THANK YOU TO THESE PEOPLE FOR HONORING THEIR MINYAN COMMITMENT...

Ben Abrams, Marlene Abrams, Fran Abramson, Bruce Arenson, Chuck & Sara Aron, Elizabeth Atwater, Barry Balik, David Bardach, Terri Behrman, Betsy Bodker, Rickey Briskman, Brian & Irene Caminer, Sarah Davelaar, Steve Durchslag, Paula Elsberg, Arthur Elstein, Terry Fadern, Beth Farber, Rhoda Feldman, Gail & Dan Golden, Leila & Ruby Golding, Maxine Handelman, Debby Hecht, Sarah Hirsens, Sarah Hirsens, Dalia Hoffman, Allison Hoffman, Arnie Horwich, Judy Horwich, Aaron Kamins, Eli Kamins, Bruce Kaminsky, Jeff, Katy, Oli, & Estie Katz, Penny & Brett Keeshin, Sam Kline, Wendy Kline, Jacob Kline, Debby Lewis, Jay Lewkowitz, Jane Lippow, Liz Lippow, Ilene Lubell, Alan Mintz, Deborah Mizrahi, Shelly Parker, Andrew & Lloyd Perlow, Gary & Fraeda Porton, John Ragir,



COMMUNITY RESOURCES

JCFS LEGAL ADVOCACY CENTER

Every child needs a parent to advocate for their rights and opportunities to learn. Some children may also need a legal advocate to help ensure their access to education and other protected rights.

If you are the parent of a child with special needs with an IEP or 504 who is not satisfied with the services being provided to your child, then the JCFS Legal Advocacy Center may be a helpful resource.

The Legal Advocacy Center offers special education legal representation, consultation, information and referral services to individuals with disabilities and their families.



For more information, please contact our Anshe Emet JCFS liaison **Ann Luban**: AnnLuban@jcfs.org or 847.745.5420.



JANUARY 23 6:30PM

Join AES, JCFS & the Akiba Schechter Day School for a screening of the film on Fred Rogers, *Won't You Be My Neighbor*, followed by a discussion on

"How to talk to Children in 2019" at Anshe Emet Synagogue. This event is free and open to the community, but advanced registration is required: tinyurl.com/aeswontyoubemyneighbor

NEED TO GET IN TOUCH WITH CLERGY?

Contact our staff and we'll be happy to get you connected!

for Rabbi Siegel

Antoinette Nunez

773.868.5120
@ anunez@ansheemet.org

for Rabbis Chankin-Gould, Russo or Hazzan Mizrahi

Tamar Brooks

773.868.5125
@ tbrooks@ansheemet.org

LIKE TO LEARN MORE ABOUT MINYAN & OTHER WORSHIP SERVICES?

Naomi Weiss

773.868.5113
@ nweiss@ansheemet.org

Shabbat Torah Reading Honor Roll

We would like to thank the following congregants who have honored us by chanting Torah for our community during the past month (this does not include our Bar/Bat Mitzvah students).

**"ANSHE EMET
EMBRACES THE
VALUES OF JUDAISM
AND JEWISH LIFE.
SPIRITUALLY ANSHE EMET
ALLOWS ME TO BE THE PERSON I'VE
ALWAYS WANTED TO SHARE
WITH THE WORLD."**

-Christie Chiles-Twillie
AES Member &
Head of Shireinu

Sanctuary and Minyan: Andrew Condrell, Michael Goodgold, Rachel Harris, Zach Harris, Debby Hecht, Dalia Hoffman, Arnie Horwich, Dan Karp, Jessica Kaz, Leah Kenen, Wendy Kline, Jacob Kline, Sam Kline, Debby Lewis, Jay Lewkowitz, Ben Lichstein, David Medow, Alan Mintz, Gary Porton, Lynne Schatz, Joey Shapiro, Steve Silk, Curt Weiss, Emma Weiss, Jeanette Zemsky

Rose Crown Minyan: David Alperin, Keith Alperin, Ethan Aronson, Jake Bennett, Matt Bluestone, Jacob Cytryn, Alicia Frajman, Sara Fried, Jared Green, Levi Kaplan, Yanira Kaplan, Noah Liebman, Jane Lippow, Liz Lippow, Ann Luban, Candace Mittel Kan, Shula Orenstein, David Schwartz, Elaine Seeskin, Sahar Segal

Youth Readers: Zack Choplin-Pogrud, Lev Choplin-Pogrud, Vera Cirillo, Anna Cirillo, Alexander Dickman, Nava Fleischer, Gus Griffin, Rina Lee, Maya Lessem-Elnecave, Mira Puchtel, Eli Puchtel, Shayna Rosenstein, Dalia Schwarz, Nava Schwarz, Perla Seidner, Talia Seidner, Eli Solano, Damian Solano, Daphna Tesher

...PLEASE JOIN US AND HELP ENSURE THE VITALITY OF OUR WEEKLY MORNING MINYAN

Esther Rosenbloom, Michele Sackheim, Ed Salomon, Jerry Salzman, Neil Schwartz, Elaine Seeskin, Barry Seeskin, Ken Shapiro, Don Shapiro, Julie Ann Sklaver, Mark & Gary Smith, Yvette Smith, Elias, Eli, & Damian Solano, David Spector, Jason Star, Phil Stern, Maya Tkachak, Abe Triege, David Weil, Stew Witkov

**Monday through Friday at 7am
Rosh Chodesh at 6:50am
Sundays and National Holidays at 8:30am**

SUNDAY

MONDAY

TUESDAY

WEDNESDAY



SHABBAT SHE'LANU
שלום

FRIDAY, JANUARY 18 | 6:30 PM
WITH SPECIAL GUESTS FOR MLK WEEKEND
PROF. CHRISTOPHER BENSON & REV. WHEELER PARKER




PROF. BENSON REV. PARKER

24 Tevet

1

25 Tevet

2

NEW YEARS DAY

Synagogue Office Closed
8:30am Morning Minyan

7am Morning Minyan

29 Tevet

6

1 Shevat

7

2 Shevat

8

3 Shevat

9

8:30am Morning Minyan

Rosh Chodesh Shevat

6:50am Morning Minyan
1pm HaZaK
7pm Movie Night
7pm Jewish Ethics

7am Morning Minyan
7:45am Text on Tuesdays
7pm Gesher Program in
Memory of Linda J. Karno

7am Morning Minyan

7 Shevat

13

8 Shevat

14

9 Shevat

15

10 Shevat

16

8:30am Morning Minyan
9:15am Religious School
3:30pm Babies & Bagels

7am Morning Minyan
1pm HaZaK
7pm Jewish Ethics

7am Morning Minyan
7:45am Text on Tuesdays
7pm Gesher Program in
Memory of Linda J. Karno

7am Morning Minyan

14 Shevat

20

15 Shevat

21

16 Shevat

22

17 Shevat

23

Erev Tu B'Shevat

8:30am Morning Minyan
9:15am Religious School
12:15pm Young Families/
Shachar Tu B'Shevat Seder

Tu B'Shevat

MLK DAY

Synagogue Office Closed
8:30am Morning Minyan

7am Morning Minyan
7:45am Text on Tuesdays
6:30pm Connecting
the Expecting
7pm Gesher Program in
Memory of Linda J. Karno

7am Morning Minyan
6:30pm "Won't You Be My
Neighbor" screening &
discussion on "How to Talk to
Children in 2019"
(with JCFS &
Akiba Schechter Day School)

21 Shevat

27

22 Shevat

28

23 Shevat

29

24 Shevat

30

8:30am Morning Minyan
9:15am Religious School
9:15am Little Builders
10am Hartman Class:
*Letters to My
Palestinian Neighbor*

7am Morning Minyan
1pm HaZaK
7pm Jewish Ethics

7am Morning Minyan
7:45am Text on Tuesdays
6:30pm Connecting
the Expecting
7pm Gesher Program in
Memory of Linda J. Karno

7am Morning Minyan

THURSDAY

26 Tevet

3

7am Morning Minyan
6:30pm YAD Basketball

FRIDAY

27 Tevet



4:24pm

4

7am Morning Minyan
8:45am Lerner's of Torah
Parsha Class
7:15pm YAD &
Community Shabbat Service
8:15pm YAD & Dinner

SATURDAY

28 Tevet

5

Parashat Vaera
Torah Portion:
Exodus 6:2-9:35
Haftarah:
Ezekiel 28:25-29:21

9am Parsha Class
9:30am Shabbat Morning Service
Bat Mitzvah of Celia Marjorie Pincus
9:30am Rose Crown Minyan
12pm Kiddush Lunch
1:15pm Shabbat Mincha Service

4 Shevat

10

7am Morning Minyan
4:15pm Religious School
6:30pm Great Jewish Text
6:30pm YAD Basketball

5 Shevat



4:31pm

11

7am Morning Minyan
8:45am Lerner's of Torah
Parsha Class
6:30pm Shabbat Neshamah
6:30pm Lakeview Minyan
Service & Potluck

6 Shevat

12

Parashat Bo
Torah Portion:
Exodus 10:1-13:16
Haftarah:
Jeremiah 46:13-46:28

9am Parsha Class
9am JBC Class
9:30am Shabbat Morning Service
9:30am Rose Crown Minyan
12pm Kiddush Lunch
1:00-4:00pm Shabbat Is Awesome
1:15pm Shabbat Mincha Service

11 Shevat

17

7am Morning Minyan
4:15pm Religious School
6:30pm YAD Basketball

12 Shevat



4:39pm

18

7am Morning Minyan
8:45am Lerner's of Torah
Parsha Class
6:30pm Shabbat Evening Service
6:30pm Shabbat Shelanu Pro-Neg
7:15pm Shabbat Shelanu
service & special MLK guests

13 Shevat

19

Parashat Beshalach
Torah Portion:
Exodus 13:17-17:16
Haftarah:
Judges 4:4-5:31

MLK DVAR IN SANCT.

9am Parsha Class
9am JBC Class
9:30am Shabbat Morning Service
Bar Mitzvah of Asher Lou Berman
9:30am Rose Crown Minyan
12pm Kiddush Lunch
1:15pm Shabbat Mincha Service

18 Shevat

24

7am Morning Minyan
4:15pm Religious School
6:30pm Great Jewish Text
6:30pm YAD Basketball

19 Shevat



4:47pm

25

7am Morning Minyan
8:45am Lerner's of Torah
Parsha Class
6:30pm Shabbat Evening Service
6:45pm Mishkan

20 Shevat

26

Parashat Yitro
Torah Portion:
Exodus 18:1-20:23
Haftarah:
Isaiah 6:1-7:6; 9:5-9:6

9am Parsha Class
9am JBC Class
9:30am Shabbat Morning Service
9:30am Rose Crown Minyan
12pm Kiddush Lunch
1:15pm Shabbat Mincha Service

25 Shevat

31

7am Morning Minyan
4:15pm Religious School
6:30pm YAD Basketball

SHABBAT YOUTH SERVICES EVERY SATURDAY
9:45am Ruach Class | 10am Shalom Shabbat | 11am Ruach & Jr. Congregation | 11am Shachar
BABYSITTING for children 18 months and older is available in room 104
every Shabbat morning from **9:30am-12:30pm**.

We are always adding new events. For the most recent calendar listings visit:

ANSHEEMET.ORG/CALENDAR



KIDDUSH LUNCHEON FUND

Celebrate with a gift to the Kiddush Luncheon Fund!

Whether you are celebrating a special occasion like a new baby, a wedding engagement, anniversary, birthday or commemorating the loss of a loved one for Yahrzeit – share your life cycle events with the congregation by making a gift to the Kiddush Luncheon Fund.

Any gift amount is welcome. Sponsorships of \$500 or more will be specially acknowledged in our weekly Shabbat bulletin. Contact Kim Carter for details: kcarter@ansheemet.org | 773-868-5119.

February 2019

ANSHE EMET SYNAGOGUE

SUNDAY

MONDAY

TUESDAY

WEDNESDAY



FRIDAY, FEB 15: Shabbat Shelanu welcomes **Rabbi Lauren Tuchman**, who was named to the Jewish Week's 36 under 36 for her innovative leadership concerning inclusion of Jews with disabilities in all aspects of Jewish life.

SATURDAY, FEB 16: Rabbi Tuchman will give the D'var during Shabbat services in the sanctuary. She will also lead a post-kiddush discussion in honor of JDAIM at 1pm.

28 Shevat

3

29 Shevat

4

8:30am Morning Minyan
8:30am Men's Club:
World Wide Wrap
9:15am Religious School
9:15am Little Builders
10am Hartman Class:
*Letters to My
Palestinian Neighbor*

7am Morning Minyan
1pm HaZak
7pm Jewish Ethics

30 Shevat

5

Rosh Chodesh Adar I, Day 1

6:50am Morning Minyan
7:45am Text on Tuesdays
6:30pm Connecting
the Expecting
7pm Gesher Program in
Memory of Linda J. Karno
7pm Wine, Women & Walking
with God Series

1 Adar I

6

Rosh Chodesh Adar I, Day 2

6:50am Morning Minyan

5 Adar I

10

6 Adar I

11

8:30am Morning Minyan
9:15am Religious School
9:15am Little Builders
10am Hartman Class:
*Letters to My
Palestinian Neighbor*

7am Morning Minyan
1pm HaZak
7pm Jewish Ethics

7 Adar I

12

7am Morning Minyan
7:45am Text on Tuesdays
6:30pm Connecting
the Expecting
7pm Gesher Program in
Memory of Linda J. Karno
7pm Wine, Women & Walking
with God Series

8 Adar I

13

7am Morning Minyan

12 Adar I

17

13 Adar I

18

8:30am Morning Minyan
10am Hartman Class:
*Letter to My
Palestinian Neighbor*

PRESIDENTS DAY
Synagogue Office Closed
8:30am Morning Minyan

14 Adar I

19

7am Morning Minyan
7:45am Text on Tuesdays
7pm Gesher Program in
Memory of Linda J. Karno

15 Adar I

20

7am Morning Minyan

19 Adar I

24

20 Adar I

25

8:30am Morning Minyan
9:15am Religious School
9:15am Little Builders
10am Hartman Class:
*Letter to My
Palestinian Neighbor*

7am Morning Minyan
1pm HaZak
7pm Jewish Ethics

21 Adar I

26

7am Morning Minyan
7:45am Text on Tuesdays
7pm Gesher Program in
Memory of Linda J. Karno
7pm Wine, Women & Walking
with God Series

22 Adar I

27

7am Morning Minyan

A BOOK GROUP FOR **SHALOM HARTMAN** LEARNERS

"Letters to my Palestinian Neighbor" by Yossi Klein Halevi

This program is generously sponsored by Lee and Jerry Zoldan

This ambitious work is an attempt to offer a new language for peace at a time when conflict between Israelis and Palestinians is escalating and a solution seems impossible. With 10 lyrical and provocative letters, Halevi is the first Israeli author to directly address Palestinians in an attempt to explain how the conflict appears through Israeli eyes. Combining a powerful commitment to Israel's legitimacy, with deep empathy for Palestinian suffering, he reveals the complex strands of faith, pride, anger, & anguish he feels as a Jew living in Israel.

BEGINS JAN 27 | QUESTIONS? Contact Amy Karp | akarp@ansheemet.org | 773.868.5139

CAMP SCHOLARSHIP

INFORMATION

The Joseph and Ruth Tumpeer Scholarship Fund... encourages Jewish summer experiences for youth by offsetting a portion of the cost of Jewish summer camp attendance. The scholarship is need-based.

To apply, visit:

ansheemet.org/ScholarshipApplication

Questions? Contact **Naomi Richman:**

773.868.5122 | nrichman@ansheemet.org

All submissions due by February 4, 2019.


ANSHE EMET SYNAGOGUE

Shevat-Adar I 5779

THURSDAY


Rabbi Lauren Tuchman's visit to Anshe Emet honors the life and generosity of Dr. Dillie Grunauer, a friend, activist and inspiration to many within the Anshe Emet Community.

FRIDAY

26 Shevat  4:56pm **1**
7am Morning Minyan
8:45am Lerner's of Torah Parsha Class
12:00pm ZOOM Melton Class
5:45pm First Friday Family Service & Dinner
6:30pm Shabbat Evening Service
7:15pm YAD Service & Dinner

SATURDAY

27 Shevat **2**
9am Parsha Class
9am JBC Class
9:30am Shabbat Morning Service
Bat Mitzvah of Chloe Miller
9:30am Rose Crown Minyan
12pm Kiddush Lunch
1:00pm Tikkun Chicago
1:15pm Shabbat Mincha Service

2 Adar I **7** 3 Adar I  5:04pm **8**
7am Morning Minyan
4:15pm Religious School
6:30pm Great Jewish Text
6:30pm Sisterhood Book Club
7pm Shireinu

4 Adar I **9**
9am Parsha Class
9am JBC Class
9:30am Shabbat Morning Service
Religious School 5th & 6th Grade Shabbat
9:30am Rose Crown Minyan
12pm Kiddush Lunch
1:00-4:00pm Shabbat Is Awesome
4:00pm Religious School 4th Grade Havdalah

9 Adar I **14** 10 Adar I  5:13pm **15**
7am Morning Minyan
4:15pm Religious School
6:30pm YAD Basketball
7pm Shireinu

11 Adar I **16**
9am Parsha Class
9am JBC Class
9:30am Shabbat Morning Service
9:30am Rose Crown Minyan
12pm Kiddush Lunch
1:00pm Discussion w/ Rabbi Tuchman
1:00pm Tikkun Chicago
1:15pm Shabbat Mincha Service
5:00pm Mincha *Bar Mitzvah of Jack Bender*

16 Adar I **21** 17 Adar I  5:21pm **22**
7am Morning Minyan
4:15pm Religious School
6:30pm Great Jewish Text
6:30pm YAD Basketball
7pm Shireinu

18 Adar I **23**
9am Parsha Class
9am JBC Class
9:30am Shabbat Morning Service
9:30am Rose Crown Minyan
12pm Kiddush Lunch
1:00pm Tikkun Chicago
1:15pm Shabbat Mincha Service
5:00pm Mincha *Bar Mitzvah of Jonah Arnold*

23 Adar I **28**
7am Morning Minyan
4:15pm Religious School
6:30pm YAD Basketball
7pm Shireinu

SHABBAT YOUTH SERVICES EVERY SATURDAY
9:45am Ruach Class | 10am Shalom Shabbat | 11am Ruach & Jr. Congregation | 11am Shachar
BABYSITTING for children 18 months and older is available in room 104 every Shabbat morning from **9:30am-12:30pm**.

We are always adding new events. For the most recent calendar listings visit:

ANSHEEMET.ORG/CALENDAR

JOSEPH & BELLE BRAUN ANSHE EMET RELIGIOUS SCHOOL NEWS

by Laurie Orenstein
Principal, Joseph & Belle Braun
Anshe Emet Religious School
lorenstein@ansheemet.org

TU B'SHEVAT & MLK DAY

January 20

Our Religious School will be celebrating Tu B'Shevav and MLK Day with special programming during normal school hours. We'll learn about social and environmental justice in the context of these holidays, with a focus on civil rights. Our younger students will also enjoy a special Tu B'Shevav Seder. Registration information on pg. 11 & online at: tinyurl.com/YoungFamilySeder2019.

TORAH IN OUR TOWN:

Chicago As Our Classroom | March 3

This past October over 300 Anshe Emet parents and kids made the world a better place at 12 different organizations, as part of the first ever Anshe Emet Family Education Day!

Our next Family Day is March 3, when we discover how Chicago is our classroom, teaching us unique insights into our precious Torah Stories.

All Anshe Emet families with children in JK-8th grade – Religious School, Bernard Zell, Chicago Jewish Day School or Akiba Schechter – are invited to choose from experiences such as researching the animals of Noah's Ark at the Lincoln Park Zoo, discovering works of art that depict Torah Stories at the Art Institute, exploring how the slaves in Egypt built the pyramids at the Field Museum, and more!

Registration opens in late January.

This event replaces on-site Religious School classes for March 3. Questions?

Please contact Max Handelman:
mhandelman@ansheemet.org.

Laurie Orenstein

MAZEL TOV TO OUR UPCOMING B'NAI MITZVAH



CELIA PINCUS
January 5, 2019
Daughter of
Claudia Mendelson &
Joshua Pincus



ASHER BERMAN
January 19, 2019
Son of Vanda &
Matt Berman



CHLOE MILLER
February 2, 2019
Daughter of Jennifer &
Steve Miller



JACK BENDER
February 16, 2019
Son of Dayna Bender



JONAH ARNOLD
February 23, 2019
Son of Jessie & Aric Arnold

Want to learn more about the Bar/Bat Mitzvah process or get your child enrolled to become a Bar/Bat Mitzvah? We are happy to help answer any questions you might have!

THE ARTHUR & PERLE MALKIN



Center for JEWISH LIFE
Anshe Emet Programming is generously
supported by The Arthur and Perle Malkin
Center for Jewish Life

@ Naomi Weiss
773.868.5113
nweiss@ansheemet.org



Interested in
learning more
about Religious
School?

@ Hannah Schreiber
773.868.5143
hschreiber@ansheemet.org

YOUTH UPDATE

by **Samantha Isenstein**
Youth & Young Adult Director
sisenstein@ansheemet.org

SHACHAR (K-2ND GRADERS)

Sunday January 20 | 12:15-2pm

Tu B'Shevat Seder - See Young Family column for registration.

MACHAR (3RD-5TH GRADERS)

January 12 | 6pm-8:30pm

Machar's Unbelievable Under-Nighter! Join us for Havdallah, dinner and a movie with lots of yummy snacks. Open to all 3rd-5th graders so bring your friends!

Register at: tinyurl.com/macharunder19

Thursday February 7 | 6:15pm-7:30pm

Join Machar / Kadima Macabiah for a night of sports, games and dinner. Open to all 3rd-8th graders! \$10 for this event!

Register at: tinyurl.com/macharkadima19



KADIMA (6TH-8TH GRADERS)

January 27 | 12pm-4pm

Kadima is going Snow Tubing! \$25 for Kadima members; \$35 for non-members. Open to all Jewish 6th-8th graders, includes lunch, transportation and snowtubing! Advance registration is required: tinyurl.com/kadimasnow19

SHMUSY (9TH-12TH GRADERS)

Calling all 8th Graders! Starting in January we welcome 8th graders to join SHMUSY at our chapter and regional CHUSY Programs. You can still attend Kadima events, but are welcome to come to USY events as well! We can't wait to see you!



First Friday Shabbat Service & Dinner | 7:15pm

Friday, January 4 | tinyurl.com/yadjan19

Friday, February 1 | tinyurl.com/yadfeb19

AE SWEETHEARTS

AE Sweethearts is our new programming for couples in their 20s and 30s who are in a committed relationship, engaged, or newly married.

Save the date for our next fun event: **Tuesday, Feb. 19, 2019**



CHICAGO BULLS GAME:

Saturday, January 19

Meet at Anshe Emet at 6:00pm for dinner and Havdallah. Open to all Jewish 8th-12th graders!

Advance Registration is required:

TINYURL.COM/SHMUSYBULLS19

OTHER DATES TO SAVE:

- **Tuesday January 8** | Lounge Night at 7pm.
- **January 25-26** | CHUSY Shabbatone at Congregation Beth Shalom in Northbrook for more info go to CHUSY.org.
- **Saturday Feb. 9** | Ta'am Yisrael Participants-Save the date for your Anshe Emet Send off during Shabbat Services.
- **February 12** | Lounge Night at 4pm.
- **Wednesday, Feb. 27** | Joint Lakeview Teen Program at Temple Sholom at 6pm.
- **March 1-3 Weekend** | We are also looking for host homes for International Board Weekend. Interested families can learn more and fill out their information here: tinyurl.com/intlboardweekend19

Sam Tra

YOUNG FAMILIES

by **Maxine Handelman**
Director of Family Life & Learning
mhandelman@ansheemet.org

Find your friends and joy-filled Jewish life at Anshe Emet, where we are always building pathways to community for families with young children!

BABIES AND BAGELS

Sunday January 13 | 3:30-5pm

A fabulous musical playdate for families with kids 2 and under. Program is free, but registration is requested:

tinyurl.com/BabiesandBagelsJan2019

YOUNG FAMILY/SHACHAR TU B'SHEVAT SEDER

Sunday January 20 | 12:15-2pm

Families with children 4 years to 1st grade celebrate trees! Register at:

tinyurl.com/YoungFamilySeder2019

LITTLE BUILDERS: WINTER INTO SPRING SERIES

Starts Sunday January 27

Families with 2-3 year olds join to BUILD amazing community! Six session class, 9:15am-10:45am. Register at:

tinyurl.com/LittleBuildersSpring2019

FAMILY KABBALAT SHABBAT SERVICE & DINNER

First Friday of every month. First time families are free - use code **1stTimeFam** when registering:

February 1 | 5:45pm

We will celebrate Jewish Disability Awareness and Inclusion Month!

tinyurl.com/FirstFridayDinnerFeb2019

March 1 | 5:45pm

Register at:

tinyurl.com/FirstFridayDinnerMar2019

Learn more at:

ansheemet.org/youngfamilies

Max Handelman

Join our Young Family mailing list by emailing:

AEYF-SUBSCRIBE@YAHOOGROUPS.COM

to get the latest on what's happening for your family.

Or, join our Facebook group! [FACEBOOK.COM/GROUPS/AESYF](https://www.facebook.com/groups/AESYF)

Shabbat As You Are

A MUSICAL SHABBAT EXPERIENCE DESIGNED FOR FAMILIES WITH KIDS IN 5TH THRU 12TH GRADES.

FEBRUARY 8 | 6:30 PM

Anshe Emet's Annual PURIM CELEBRATIONS

SAVE THE DATES

Sunday, March 17 | Religious School Megillah Reading & Synagogue Carnival

Wednesday, March 20 | Anshe Emet Megillah Reading & Party



STUDY WITH THE ANSHE EMET SISTERHOOD

by Cantor Elizabeth Berke
Hazzan Sheni,
eberke@ansheemet.org

For the last few years, through Marlene Reid's initiation, *Wine, Women and Walking with God* has explored the multi-faceted world of Judaism. This winter is no exception as we welcome Dr. Devorah Schoenfeld, Associate Professor at Loyola, who has an expertise in Jewish-Christian relations. On February 5, 12 and 26 we will investigate the historical separation of Judaism and



Christianity, study commentaries from both traditions on the Song of Songs, and end with Jewish-Catholic relations. Class is 7pm-8:30pm and registration will be available through ansheemet.org/sisterhood

For Sisterhood Shabbat On February 23 we welcome Ariella Rada, an Ethiopian Jew and former drill instructor in the IDF (see next page) who now works in Chicago as the Consul for Academic and Community Affairs. She will speak during services and also at a post-kidush discussion.

I look forward to learning with everyone; check our [Learning tab](#) online for more opportunities.

Elizabeth Berke

Discover the Anshe Emet channel on



You'll find learning resources, Divrei Torah, the Kaplan concert and more.

Search for channel name:

ANSHE EMET AT YOUTUBE.COM

HaZak for Retired Adults • Mondays @ 1pm

HOKHMAH (WISDOM) • ZIKNAH (MATURITY) • KADIMAH (LOOKING AHEAD)

HaZak is an Anshe Emet daytime program for mature adults with active minds. Co-taught by our clergy and other community educators, this year HaZak is focusing on Jewish History with the Melton curriculum "Crossroads." Generously funded by Beatrice Mayer, z"l.

Upcoming classes:

January 7: Cantor Berke

January 14: Rabbi Chankin-Gould

January 21: No HaZak (MLK Day)

January 28: Cantor Berke

February 4: Rabbi Russo

February 11: Rabbi Chankin-Gould

February 18: No HaZak (President's Day)

February 25: Rabbi Siegel



Drop off your donations now at the Giving Center outside the sanctuary, opposite the gift shop. We are currently accepting donations for:

THE NIGHT MINISTRY

Donation Deadline:

Ongoing

What's Being Collected:

Hotel-sized Toiletries (shampoo, conditioner, body wash, soap, body lotion) • Deodorant • New Tooth-pastes • New Warm Socks • New Hats • Scarves • Gloves.

Contact Information:

Janine Landow-Esser at

[Janine.landow-esser](mailto:Janine.landow-esser@quarles.com)

@quarles.com

STAND UP FOR KIDS

Donation Deadline:

January - February

What's Being Collected:

Clothes for 17-25 year olds • Pack-aged underwear (men's or women's) • Shoes over size 9 for women; 10 for men • Coats • Bedding • Umbrellas • Tampons • Toiletries • Hand sanitizer • Purses • Belts • Costume jewelry • Make-up • Hair products • Nailpolish

Contact Information:

Felice Schlessinger at

felice@schlessingerfamily.com

Thank you for your support!



Molly Sender

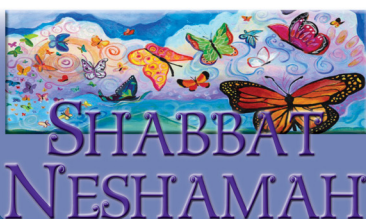
molly.sender@gmail.com

Zach Seeskin

zach.seeskin@gmail.com

For more information

A REFLECTIVE & MUSICAL SHABBAT EXPERIENCE FOR ALL AGES



6:30 PM
JANUARY 11
& MARCH 8

Has your contact information changed?

Would you like to receive our weekly
Shabbat Today email?



Brian Schmidt

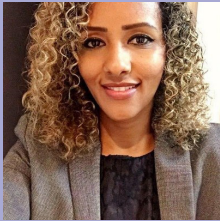
773.868.5114

bschmidt@ansheemet.org



ANNUAL SISTERHOOD SHABBAT SERVICE & POST-KIDDUSH PROGRAM FEBRUARY 23, 2019

This service has become a highlight of the Sisterhood. It is a time for the women of Anshe Emet to come together.



This year, we will be joined by **Ariella Rada**, the Consul General for Academic and Community Affairs at the Consulate General of Israel to the Midwest. Ariella is an Ethiopian Jew and a former drill instructor in the IDF. She will speak about her personal journey, Ethiopians in Israel, her role at the Consulate in the Midwest, and the current situation in Israel during Shabbat morning service, as well as at our Sisterhood Post Kiddush Program.

Interested in participating in our service: Aliyot, Torah Reading, Haftarah, any of the blessings or leading any portion of the service? Please contact event organizer Larisa Kenen at Larisak@gmail.com

Learn more at:
ansheemet.org/sisterhood

KEHILLA KEDOSHA DISABILITY AWARENESS AND INCLUSION MONTH AT AES

February is Jewish Disabilities Awareness and Inclusion Month (JDAIM). We honor JDAIM at Anshe Emet in many ways, the full details of which can be found on our website at ansheemet.org/inclusion.

In particular, we are grateful to the Kehillah Kedosha committee for their tireless efforts to ensure inclusion not just in February, but every day.

We are also delighted by the newly established and hugely successful partnership between our religious school and Keshet. Keshet works directly with our educators, offering on-site support and inclusion training. A representative of Keshet is present every Sunday of religious school, providing resources to both our teachers and our madrichim (teacher's aides). Additionally, this partnership enables us to offer our teachers specific professional development opportunities with Keshet, enhancing their ability to further the success of each individual student.

One of the pillars of youth education at Anshe Emet is diversity. We understand that our children learn in different ways and that we need to, not just embrace these differences, but make sure our educational opportunities are supportive for all those in our care.

"Keshet works directly with our educators, offering on-site support and inclusion training."



When our LaAtid Task Force began to consider how to meet the needs of our diverse learners we realized that, while we had some resources already available, many times these were implemented on an as-needed basis, as opposed to making sure our entire system of education was geared towards including everyone in learning, full-time. With Keshet, that is now possible.

Globally, Keshet has trained over 15,000 staff members, providing the tools necessary for successful inclusion. Keshet's local leadership provide the inspiration, direction, and funding required to fulfill the organization's mission: to do whatever is necessary to allow individuals with disabilities to achieve their potential. This month, we will be highlighting the various ways that show how inclusion is emblematic to our community at Anshe Emet on a daily basis.

While we are just at the beginning of this journey, we can already see the difference in how we approach teaching and programs and how all of our kids are welcomed at Anshe Emet.

Rabbi D'ror Chankin-Gould
& Dani Lazar
LaAtid Task Force Co-Chairs

"I KNEW RIGHT AWAY WE HAD FOUND WHAT WE WERE LOOKING FOR..."

Two years ago, when my family began the search for a synagogue, I had a list in mind of what I wanted. At the time, I had an 8 year old and two 4 year olds. I knew I wanted a synagogue that offered programming for young children and a religious school.

But I was nervous, too. Would my son be accepted? Would his special needs be accommodated?

We attended a First Friday Family Shabbat service to see what Anshe Emet was all about. I knew right away we had found what we were looking for. Our family was welcomed with open arms and I was assured my son was not only

accepted, but that everyone would do their best to be sure he had whatever he needed to be happy while he was here.

In these troubled times, many Jews are craving community. It is incumbent on us to be sure every Jew feels welcome and accepted in our congregations. This is why the work of Kehilla Kedosha, Anshe Emet's inclusion committee, is so important and why I look forward to celebrating the diversity in our community in February.

For details on the scheduled events, be sure to check the Kehilla Kedosha page on the Anshe Emet website at: ansheemet.org/inclusion.

Stefanie Cirillo,
Member, Kehilla Kedosha

ECO TIP from TEAM YAROK



OPT FOR THE DISHWASHER OVER HAND WASHING

It may seem counter-intuitive, but it turns out washing dishes by hand uses a lot more water than running the dishwasher, even more so if you have a water-conserving model. The EPA estimates an efficient dishwasher uses half as much water, saving close to 5,000 gallons each year. Just make sure to run full loads and scrape rather than rinse dishes before loading into the dishwasher.

WE APPRECIATE YOUR THOUGHTFUL DONATIONS

Your gift sustains us as a center for Jewish Life.

To donate, please visit ansheemet.org/donate

Contributions listed are those received from November 6 to December 3, 2018.

SUSTAINING FUND



We hope you find this new newsletter format engaging and informative. Beginning in this issue, we will highlight new monthly donations, while continuing to list all year-to-date donations on our website, as well as all donations in our annual Program Guide.

Art Friedson, **President**
Jeremy Liss and Arnold Rubin,
Development Committee Co-Chairs

NER TAMID

Joan & Linda Friedman
Michael & Mary Silver

ARON HA'KODESH

Kimberly & Arnold Rubin

ETZ CHAYIM

Norman & Virginia Bobins
Crown Family Philanthropies
Steve Durchslag
Betsy Gidwitz
Hedwig & Robert Golant
Bill & Judy Goldberg
Roslyn & Sam Grodzin
Edwin & Susan Katz
Elaine & Don Levinson
Ross & Lori Laser
Barry Malkin & Jodi Block
Judd & Katherine Malkin
Ami & Miki Pissetzky
Avi & Joan Porat
David & Jamie Schwartz
Howard & Judy Tullman
Lee Simons and Jerry Zoldan

MAGEN

Vickie Brodersen
Warren Laski & Gretchen Silver

RIMONIM

Jane Lippow

KLAF

Arnold & Judy Horwich
Robert & Linda Levin
John & Judith Shear

OTIOT

Gary Bazelon
Glenn & Michelle Holland
Jack Rodgon
Barry & Elaine Seeskin

SOFRIM

Barry Ash
Cary & Teri Cicurel
Milton & Sydney Esbitt
Richard & Nancy Feldstein
Joel Clickman
Sharon Gonsky
Harold Hirshman & Lorie Chaiten
Joy Horwich
Trudy Isbitz Brodsky
Judith Kahn
Larry Kosova & Marlene Reid
Joseph Lang

Marc & Angela Levenstein
Tony Lord
Michael Lufrano & Elizabeth Bodner
Susanna Maltsman
Amy McDowell
Barbara Miller
Julie Neff
Jonathan & Christine Norton
Ashley Olian
Kati Samet
Amy Simon
Lisa Simon
Deanna Spear
Beth Vorwaller
Evan & Marianne Zemil

GENERAL DONATIONS

In honor of:

SCOOTER SIMON:
Barry & Andrea Ash
Gary Bazelon
Teri & Cary Cicurel
Glenn & Michelle Holland
Andy & Jennifer Lucas
Steven & Julie Neff
Amy Simon
Daniel Simon
Lisa Simon
Beth Vorwaller

In memory of:

CLARISE GREENBERG:
Ashley Olian
LOIS HAUSELMAN:
Richard & Nancy Feldstein
Judith Kahn
Joseph Lang
Jane Lippow
Tony Lord
Benjamin & Carol Mackoff
Kati Samet
DANIEL SEESKIN:
Barry & Elaine Seeskin

SYNAGOGUE FUND

Joyce Hammer
Samuel Markind

In honor of:

LINDA SIEBERT: Allen & Elaine Cizner
SCOOTER SIMON: Burton Ury

In memory of:

STEPHEN DAAR: Nancy Burke
ARTHUR GOLD: Allan & Bonnie Sweet
BUTCH GOLD: Michael & Susan Weininger
LOIS HAUSELMAN:
Stacey Amster
Richard & Joan Bernhard
Bindy Bitterman
Don Borzak
Brian & Irene Caminer
Burt & Marion Fainman
Bill Goldberg & Brenda
Liebling-Goldberg
Donald & Alice Goldsmith
David & Gail Gotskind
Martin & Iris Gradman
Elie Kearns
Sharon Kolesky
Henry & Lucile Krasnow

Lawrence Lax
Felicia Lerner
Stephen & Phyllis Lishnoff
Susan Livingstone
Ned & Joan Lufrano
Marta Piekos
Shelley Rochell
Ilana Rovner
Jenifer Rowland
Susan Rubnitz
Ralph & Lynne Schatz
Mark & Lynn Shapiro
Robert Stopa
Marti Zelikoff
Kaarem Zobeck
STANLEY SCHWARTZ:
Roz Lax
Gary Wigoda & Barbara Gressel
LILA RUTH SIEGEL:
Martin & Kerri Herman
Stacey Landsman

Yahrzeit

In memory of:

HYMAN & INA RAE ABRAMS:
Marlene Abrams
MORRIS APRISON:
Barry & Erin Aprison
JACOB BEERMANN:
Miles & Helene Beermann
AUBREY BEHRMAN: Terry Behrman
ELAINE L. BROWN:
Alan & Janet Brown
SEYMOUR CHAPPE:
Richard & Ellen Chappe
IRVING COHEN:
Michael & Sandra Cohen
WAYNE COHEN: Andrea Cohen
WALTER FAINMAN:
Burt & Marion Fainman
JOAN FREEMAN:
Benjamin & Jamie Wendt
SARAH GARR: Judith Gilbert
MILDRED GEORGE: Barbara Gold
ROSE GILBERT: Judith Gilbert
WALTER HARTMANN:
Daniel & Gail Golden
SIDNEY HILDER: Allen & Karen Hilder
SHULAMIT ISRAELIT:
David & Ruth Kahn
DAVID S. LEAVITT: Joyce Leavitt
IOSIF LERNER:
Leonid & Raisa Brandshpigel
MATILDA MANDELL:
Jerome & Paula Mandell
AINEE PERPER:
Marc Perper & Marianne Katz-Perper
GILBERT ROSTON:
Robert Rosen & Laurie Roston Rosen
RICHARD ROVNER: Ilana Rover
MARTHA RUBIN:
Arnold & Kimberly Rubin
BILL SALLERSON:
Sam & Hillary Sallerson
JULIUS SALZMAN:
Gerald Salzman & Judith Levin
BERNARD SCHWARTZ:
Thomas & Linda White
EMY SCHWARTZ: Donald Schwartz
GERTRUDE SHER:
Stephen & Linda Salzman
ELAINE M. SNITMAN: Lynne Sobel
ANNA VEYSTMAN:
Yefim & Mara Veytsman

MURIEL WEININGER:
David Weininger
Michael & Susan Weininger
GERTRUDE ZINDELL:
Howard & Judy Tullman
ROSE ZIVOTOFSKY:
Allen & Elaine Cizner
DENNIS ZUCKER:
Stuart & Diane Grauer

KIDDUSH LUNCHEON FUND:

Jonathan & Laura April
Zachary Silver & Tamara Frankel
Barbara Gold
Ron & Sarah Hirszen
Ross & Lori Laser
Matt Meltzer & Meredith McBride
Gil Matar & Robin Mordfin
Lee & Debbie Merovitz
Gregg Pollack
Michael & Susan Weininger

In memory of:

LOIS HAUSELMAN: Antoinette Wright

VOLUNTARY DUES

Ron & Sarah Hirszen
Matt Meltzer & Meredith McBride
Michael & Susan Weininger

TULLMAN TECHNOLOGY FUND

In memory of:

LOIS HAUSELMAN:
Steve & Deena Brozak

FRIENDS OF JTS

Barbara Gold
Ron & Sarah Hirszen
Michael & Susan Weininger

CLERGY DISCRETIONARY FUNDS

RABBI MICHAEL S. SIEGEL

Angela Fontes
Sam & Roslyn Grodzin
Ned & Joan Lufrano
Bob & Margie Rosenbaum

In memory of:

LAUREN DIANE BRILL:
Elizabeth Murphy
LOIS HAUSELMAN: Ellen Joss
RENE HERRMANN:
Stephen & Rhonda Gordon
LILA RUTH SIEGEL:
Allen & Elaine Cizner
Joy Horwich
Gregg & Joanne Silver
Rhoda Singer

RABBI DAVID RUSSO

In memory of:

LESTER SHAPIRO: Don Shapiro

HAZZAN ALBERTO MIZRAHI

Ruth Mayer



PHILANTHROPIC SUPPORT

With a contribution of \$18 or more per tribute we will be happy to send a commemoration card to the recipient of your choice.

For more information, or to make a contribution, contact Iris:

We are grateful for your support.



Iris Krandel
773.868.5152
ikrandel@ansheemet.org



Ansheemet.org/donate



If you would like to opt out of receiving a paper newsletter and switch to our electronic version, let us know:



Brian Schmidt
773.868.5114
bschmidt@ansheemet.org

MISHEBERACH LIST

If you would like to have a name placed on the misheberach (prayer for healing) list, contact Antoinette.

Names will be kept on the list for two weeks unless otherwise requested.

Let us be your support through every cycle of life.



Antoinette Nunez
773.868.5125
anunez@ansheemet.org

OUR SINCEREST CONDOLENCES

The Anshe Emet Community Expresses Its Sincerest Condolences to the Families of the following:

Lorie Mayer
Howard I. Ratain
Elaine Scheye
Allan Bernstein
Socorro Martinez
Marilyn Chapman
Rose Wigoda

***May their memory
be for a blessing.***





ANSHE EMET
SYNAGOGUE

AFFILIATED WITH THE
UNITED SYNAGOGUE OF CONSERVATIVE JUDAISM

**3751 N. Broadway Ave.
Chicago, IL. 60613-1423**

AnsheEmet.org

Phone: 773-281-1423

Fax: 773-281-2183

1ST CLASS

Presort

U.S. Postage

PAID

Permit No. 269

Skokie, IL.

FIRST CLASS

SAVE THE DATE...

SHALOM HARTMAN
SERIES

SUNDAYS | 10AM
BEGINNING JAN 27

SISTERHOOD
SHABBAT

SATURDAY, FEB 23

ADDICTION &
RECOVERY IN THE
JEWISH COMMUNITY
MARCH 1 WEEKEND

MEN'S CLUB
MAN & YOUTH OF THE YEAR
AWARDS DINNER AT AES
SUNDAY, MAR 3 | 5:30PM

Save The Date
March 31, 2019
4:00 pm

THE
CHICAGO ATHLETIC
ASSOCIATION HOTEL

Presenting:
*The Rabbi Michael S. Siegel Visionary Award
to **Pam and Scooter Simon***
*The Visionary of the Arts Award
to **Howard Levy***
*The Young Leadership of Light Award
to **Beth Horwitz***

VISIONARIES OF ANSHE EMET

 ANSHE EMET
SYNAGOGUE
for all the days of your life